

---

2002

## **Facts about adolescents from the Demographic and Health Survey—Statistical tables for program planning: Paraguay 1990**

Population Council

Follow this and additional works at: [https://knowledgecommons.popcouncil.org/departments\\_sbsr-pgy](https://knowledgecommons.popcouncil.org/departments_sbsr-pgy)

**How does access to this work benefit you? Let us know!**

---

### **Recommended Citation**

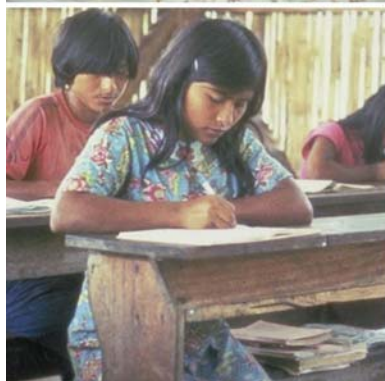
"Facts about adolescents from the Demographic and Health Survey—Statistical tables for program planning: Paraguay 1990." New York: Population Council, 2002.

This Report is brought to you for free and open access by the Population Council.

# FACTS ABOUT ADOLESCENTS FROM THE DEMOGRAPHIC AND HEALTH SURVEY

## Statistical Tables for Program Planning

### PARAGUAY 1990





One Dag Hammarskjold Plaza  
New York, New York 10017  
Telephone: 001 212-339-0500  
Fax: 001 212-755-6052  
e-mail: [pubinfo@popcouncil.org](mailto:pubinfo@popcouncil.org)  
[www.popcouncil.org](http://www.popcouncil.org)

The Population Council is an international, nonprofit, nongovernmental institution that seeks to improve the well-being and reproductive health of current and future generations around the world and to help achieve a humane, equitable, and sustainable balance between people and resources. The Council conducts biomedical, social science, and public health research and helps build research capacities in developing countries. Established in 1952, the Council is governed by an international board of trustees. Its New York headquarters supports a global network of regional and country offices.

Copyright © 2002 by The Population Council, Inc.

Any part of this report may be copied or adapted to meet local needs without permission from the Population Council, provided that the parts copied are distributed free or at cost (not for profit) and that the source is identified. Citation should take the following form: "Facts about adolescents from the Demographic and Health Survey—Statistical tables for program planning: Paraguay 1990." 2002. New York: Population Council. Any commercial reproduction requires prior permission from the Population Council. The Population Council would appreciate receiving a copy of any materials in which the text is used.

---

Cover photos courtesy of M/MC Photoshare at [www.jhuccp.org/mmc](http://www.jhuccp.org/mmc)

Photograph credits

First row: Harvey Nelson, Aimee Centivany, Kathryn Wolford for Lutheran World Relief

Second row: Lutheran World Relief, Liz Gilbert for the Packard Foundation, Lauren Goodsmith

Third row: Lutheran World Relief, Lutheran World Relief, Liz Gilbert for the Packard Foundation

## Foreword

The Population Council initiated its work on adolescents in earnest in the mid-1990s. At that time, those advocating greater attention to adolescent issues were concerned about adolescent fertility—particularly fertility outside of marriage—and, responding to the experiences of Western countries, about adolescent “risk-taking” behavior. As an international scientific organization with its mandate centered around the needs of developing countries, the Population Council sought a more nuanced and context-specific understanding of the opportunities and problems confronting adolescents in the developing world.

As a first step, the Council published a book titled *The Uncharted Passage: Girls’ Adolescence in the Developing World* (Mensch, Bruce, and Greene, 1998). In working with our colleagues inside and outside of the Council, at national and international levels, it became clear that information on adolescents, and the way data are organized, were limiting our ability to understand the diversity of their experiences or to develop programs to address that diversity. Even the words used to describe the 10-19-year-old age group (in English) presented an obstacle. Terms such as youth, adolescents, young people, and teenagers are gender-free. An age group spanning a decade was singularly inappropriate given the rapidity of transitions in this period; even five-year cohorts (10-14 and 15-19) are arguably unreasonably large.

While recognizing these limitations, we nonetheless saw the Demographic and Health Survey results as extremely useful to those seeking to understand and plan for adolescents, provided the data were organized with full understanding of their strengths and weaknesses. In the absence of data, many adolescent policies were implicitly based on the premise that the lives of adolescents in developing countries were like those of adolescents in Western countries; that is, mainly living at home with families, not working, in school, and unmarried. In fact there are significant numbers of young people in the West who do not fit this description, but even larger groups within the developing countries. Perhaps the starkest difference is the context of sexual activity: whereas the vast majority of sexually active adolescent girls in the West are unmarried, in the developing countries the vast majority are married.

In dialogue with colleagues at UNICEF, UNFPA, and PATH, and with the financial support of the United Nations Foundation, we have created tables to more clearly describe the diversity of the adolescent experience by drawing on the rich Demographic and Health Survey data. These tables are descriptive. We have included small points of commentary where something is particularly striking. We offer them to you for reflection, as a basis for developing programs, and as a basis, indeed, for arguing for an enrichment of the research attention devoted to the many transitions that occur between the ages of 10 and 19.

In addition to highlighting, wherever we could, salient dimensions and experience (e.g., schooling, work, and marital status) by age, gender, urban/rural, and economic class groupings, we also draw attention to adolescents’ living arrangements and the

shape of their families. Earlier work conducted cooperatively between the Council's International Programs and Policy Research Divisions highlighted some very surprising—often counterintuitive—facts about the “family.” Whether adolescents live with one, both, or neither parent, and whether they live with and are responsible for their younger siblings, significantly shape their schooling, work, and migration status. With increasing levels of rural-to-urban migration, and the AIDS epidemic, families under stress may tend to transfer adult burdens to their oldest children—especially to girls. Adolescent girls may be required to leave school or work for wages, sometimes in unsafe ways and away from their homes.

Another often neglected dimension of the “adolescent problematique” is the contrast between the experience of married and unmarried adolescents. Very often the experiences of married and unmarried adolescents are considered together—for example, on issues such as their level of information about and use of contraceptives. We believe that married and unmarried adolescents represent significantly different populations. Although differences between the groups may vary by topic, the difference between them is the point. In treating the adolescent population as homogeneous, the profile and needs of married adolescents have very often been completely ignored. Married girls are plausibly the most vulnerable adolescents. Detached from a supportive peer group and from their natal or native home, often married by arrangement and facing a first pregnancy, married adolescent girls deserve our attention. The tabulations presented for some countries provide preliminary and rudimentary evidence that married adolescents are, if not at greater disadvantage than their unmarried counterparts, at least different, and we should plan for those differences.

This project will be ongoing. As data for additional countries and more recent data for the countries covered here become available, we will produce new sets of tables. And as we identify other tables of potential interest we will include them. We welcome your feedback and hope you find these tables useful.

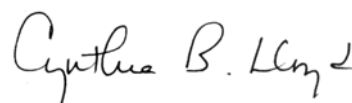
Finally, we would like to acknowledge the significant creative and analytic efforts of our colleagues in producing these tables. We thank Brian Pence, Carey Meyers, Erica Chong, Christine Pace, and Roberta Scheinman for their intellectual contributions and hard work in this undertaking.



**Judith Bruce, Senior Advisor**  
Director, Gender, Family, and  
Development Program  
International Programs Division  
Population Council



**Paul Hewett, Project Director**  
Research Associate  
Policy Research Division  
Population Council



**Cynthia B. Lloyd, Senior Advisor**  
Director of Social Science Research  
Policy Research Division  
Population Council

## Technical Notes:

1. All tables in this report are calculated from data collected for the 1990 Paraguay Demographic and Health Survey (DHS), conducted by the Centro Paraguayo de Estudios de Población and the Institute for Resource Development (IRD)/Macro Systems, Inc. The Paraguay DHS surveyed a nationally representative sample of 5,683 households. The information presented in Tables 1-7 is based on all usual residents within the age group(s) of the selected households. The calculations for Tables 8-12 are based on 5,837 women between ages 15 and 49 who responded to a more detailed individual questionnaire. Data on experience with sexually transmitted diseases and female genital circumcision were not collected for Paraguay.

More information on the design of and results from the 1990 Paraguay DHS is provided in the final report (Centro Paraguayo de Estudios de Población and IRD/Macro Systems, Inc. 1991. *Encuesta Nacional de Demografía y Salud de Paraguay 1990*. Columbia, Maryland: Centro Paraguayo de Estudios de Población and IRD/Macro Systems, Inc.). More information on the Demographic and Health Surveys, including reports, other publications, and original data, is available on the DHS Web site at <http://www.measuredhs.com/>.

2. The tables report values for which data are available for the 1990 Paraguay DHS. An X indicates that the information was not collected for that group in the 1990 survey.
3. Unless specifically designated as “percent distribution,” the cells represent percentages that do not sum to 100%. In most cases, the categories either are not mutually exclusive or do not exhaust the total population for the group. A guide to reading and interpreting the tables is included at the bottom of each page.
4. The measurement of economic status used to define the poorest 40%, middle 40%, and richest 20% of households in Tables 4-6 is based on a methodological approach discussed in Filmer, Deon and Lant Pritchett, 1999: “The Effect of Household Wealth on Educational Attainment: Evidence from 35 Countries,” *Population and Development Review*, vol. 25(1): 85-120. Derived from their work, indicators of household asset ownership (car, bicycle, television, etc.) and household characteristics (piped water, electricity, etc.) were used to create a single measure of economic status. Although the classification of economic status can be used for relative comparisons of socioeconomic groups within a country, comparisons of groups across countries are not appropriate.

## List of Tables

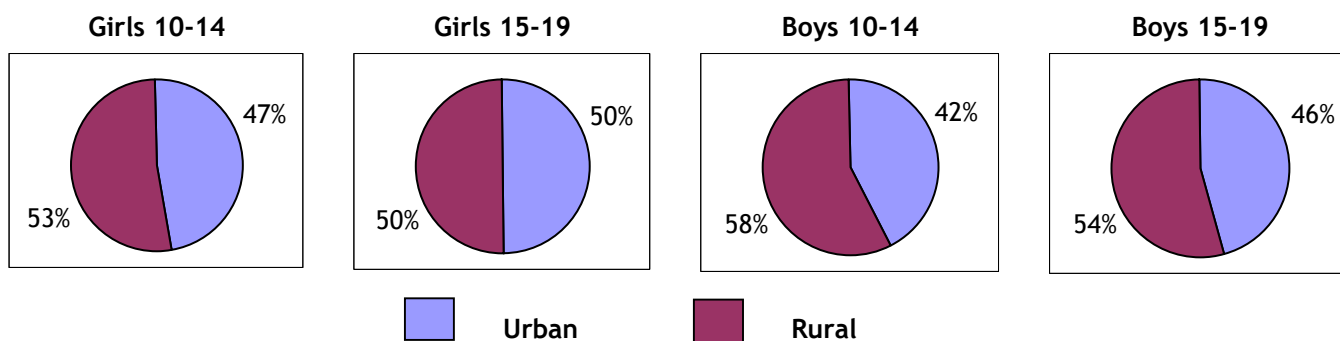
<b>Table 1</b>	Urban-Rural Residence and Population Distribution
<b>Table 2</b>	Parental Survival Status and Residence in Household
<b>Table 3</b>	Characteristics of Head of Household
<b>Table 4</b>	Educational Enrollment and Attainment
<b>Table 5</b>	Educational Enrollment and Attainment in Urban Areas
<b>Table 6</b>	Educational Enrollment and Attainment in Rural Areas
<b>Table 7</b>	Educational Enrollment in Urban and Rural Areas: Comparison Summary
<b>Table 8</b>	Marital Status
<b>Table 9</b>	Sexuality and Childbearing
<b>Table 10</b>	Educational Enrollment and Work Status
<b>Table 11</b>	Awareness and Use of Modern Contraceptive Methods
<b>Table 12</b>	Awareness of HIV/AIDS
<b>Table 13</b>	Experience with Sexually Transmitted Diseases ( <i>Data not collected for Paraguay</i> )
<b>Table 14</b>	Female Genital Circumcision ( <i>Data not collected for Paraguay</i> )

## A Summary of 1990 DHS Data on Adolescents in Paraguay

**Table 1. Urban-Rural Residence and Population Distribution**

- Adolescents ages 10-19 comprise more than one-fifth of Paraguay's total population.
- More than half of Paraguay's adolescents live in rural areas.
- Among boys and girls, 15-19-year-olds are more likely than 10-14-year-olds to live in urban areas.

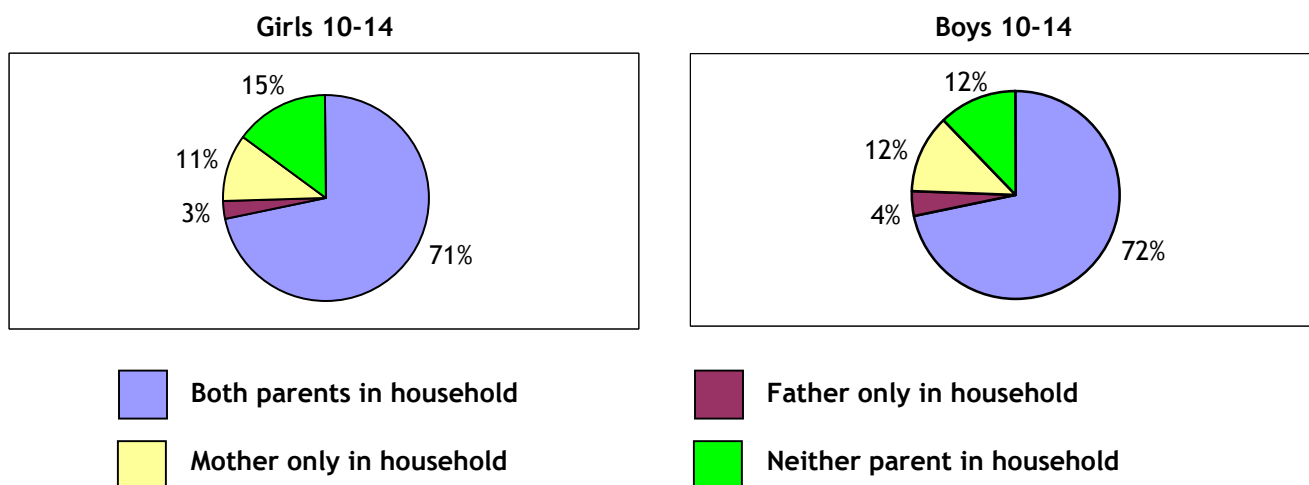
**Table 1. Urban-Rural Residence Distribution**



**Table 2. Parental Survival Status and Residence in Household**

- Nearly three-quarters of adolescents ages 10-14 live with both parents.
- Adolescents 10-14 years old who live with only one parent are three times more likely to live with only their mother than with only their father.
- Approximately one out of seven adolescents ages 10-14 lives in a household in which neither parent is present.

**Table 2. Patterns of Parent/Child Co-residence**





**Table 3. Characteristics of Head of Household**

- About one out of eight adolescents ages 10-19 lives in a female-headed household.
- Roughly one-fifth of 10-14-year-old adolescents live in households headed by someone other than a parent.

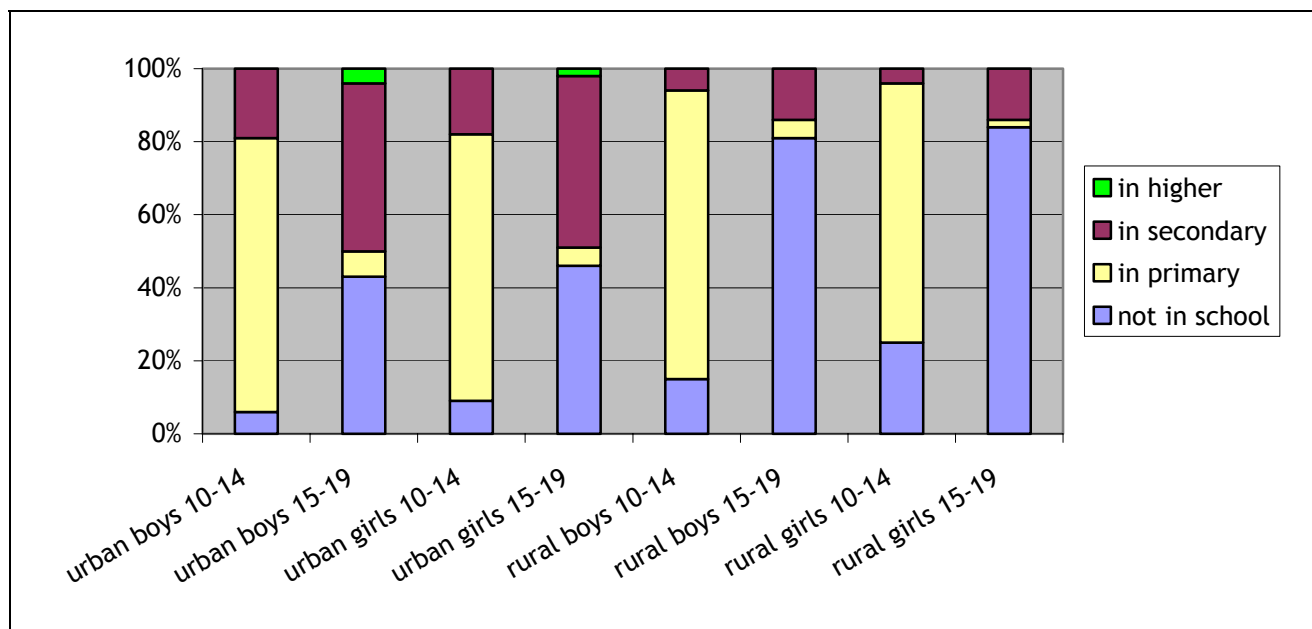
**Table 4. Educational Enrollment and Attainment**

- While almost nine out of ten 10-14-year-olds are enrolled in school, about two-thirds of 15-19-year-olds are not in school.
- Boys and girls are similarly likely to be enrolled in secondary school.
- Among 15-19-year-olds, about nine out of ten completed four or more years of education, and more than seven out of ten completed primary school.

**Tables 5-7. Educational Enrollment and Attainment in Urban and Rural Areas**

- Rural adolescents are less likely to be in school than urban adolescents; the difference is most striking among 15-19-year-olds. For instance, 53% of urban girls 15-19 years old are in school compared to just 16% of rural girls in the same age group.
- Urban adolescents ages 15-19 are more than three times as likely as rural adolescents in the same age group to be in secondary school.
- Improvement in educational attainment over the last ten years has been more pronounced in rural areas, although completion rates are still lower than those in urban areas.
- The disparity in educational attainment between rural and urban areas is particularly pronounced when comparing primary school completion rates.

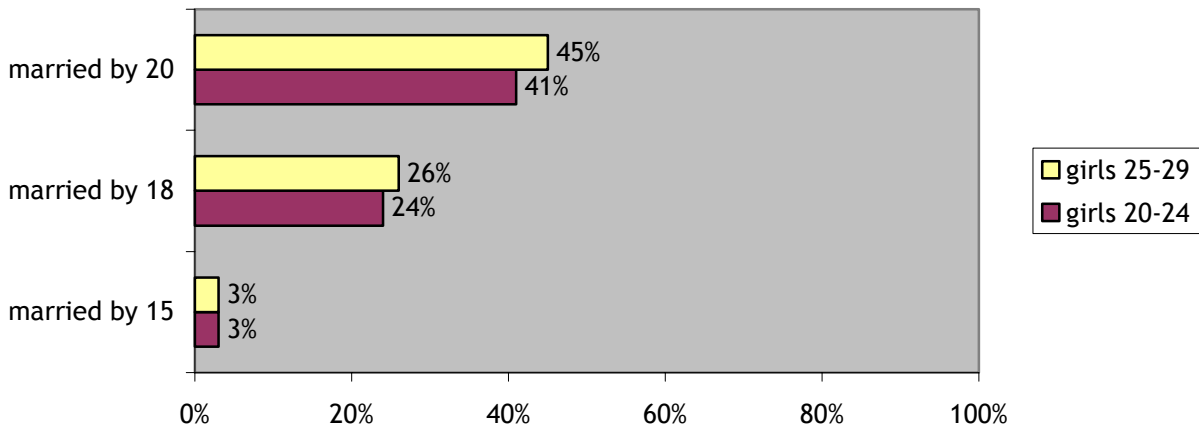
**Table 7. Educational Enrollment**



**Table 8. Marital Status**

- One out of seven 15-19-year-old girls is currently married or in a cohabiting union.
- Half of girls 25-29 years old were married by age 20.8.
- There have been no significant changes between the two age cohorts in the proportions of girls getting married by ages 15, 18, and 20.

**Table 8. Age at Marriage**



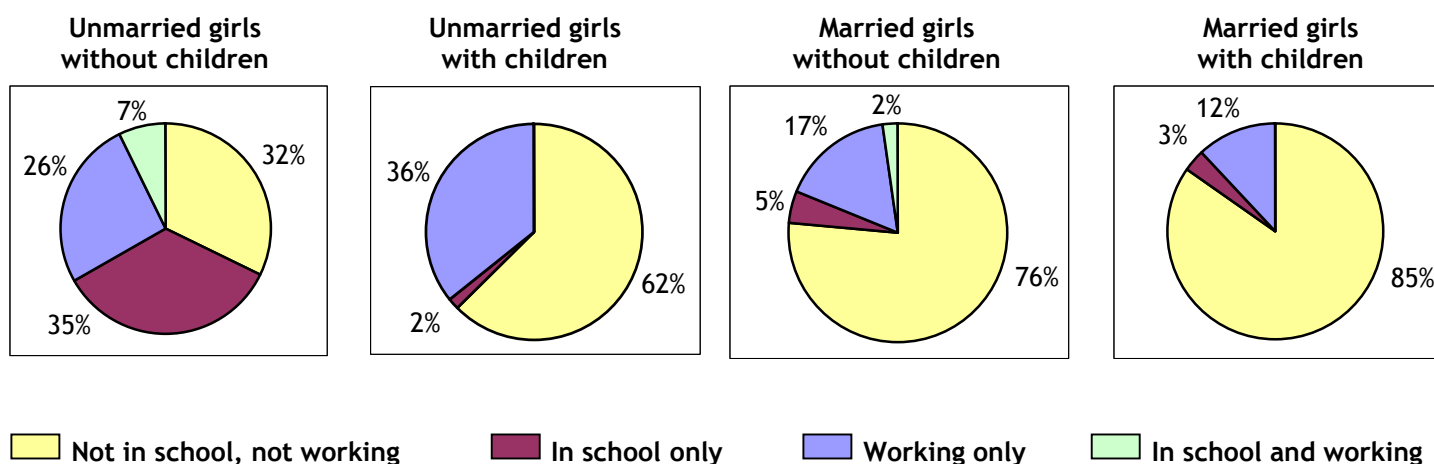
**Table 9. Sexuality and Childbearing**

- Seventeen percent of unmarried girls and 30% of all girls 15-19 years old have ever had sexual intercourse.
- More than one-sixth of girls ages 15-19 are sexually active; of these, 69% are married.
- Sixty-four percent of ever-married girls and 5% of never-married girls ages 15-19 have had a child.

**Table 10. Educational Enrollment and Work Status**

- Among 15-19-year-old girls, those unmarried without children are six times more likely than married girls without children to be in school.
- About one-third of unmarried girls ages 15-19 with children are working.
- More than three-quarters of married girls ages 15-19 are neither in school nor working.
- *Additional Information on Work Status from the U.S. State Department: Opportunities for National Service*
  - Military service in Paraguay (which is mandatory, in theory, for men) is not available for women. However, a limited number of women are accepted into the army to do medical and legal work if the army has openings in these positions and no qualified men are available. These women must already have the appropriate medical or legal credentials.
  - Placement in such jobs does not assure women of a career in the military.

**Table 10. Educational Enrollment and Work Status of Girls 15-19 Years Old**



**Table 11. Awareness and Use of Modern Contraceptive Methods**

- Most girls 15-19 years old know of a modern method of contraception; ever-married girls are more knowledgeable than never-married girls.
- Thirty-nine percent of ever-married girls ages 15-19 have ever used a modern method of contraception, and of sexually active girls in this group, 28% are currently using one. In contrast, only 3% of never-married girls in the same age group have ever used a modern method, with 13% of sexually active girls currently using one.

**Table 12. Awareness of HIV/AIDS**

- Less than 1% of sexually active girls ages 15-19 use condoms as their primary method of contraception.

**Table 1**  
**Urban-Rural Residence and Population Distribution**

	Percent Distribution			Percent of Total Population
	Urban <sup>a</sup>	Rural <sup>a</sup>	Total	
<b>Girls</b>				
10-14	47.0	53.0	100.0	5.9
15-19	49.6	50.4	100.0	5.0
<b>Boys</b>				
10-14	42.3	57.7	100.0	6.0
15-19	45.5	54.5	100.0	4.4

<sup>a</sup> Refer to the DHS report cited in the Technical Notes for the definitions used for urban and rural areas.

**Guide to reading the table:**

- In the first column of percentages (under “Urban”), read the first number as the percentage of girls 10-14 years old who live in urban areas.
- In the fourth column of percentages (under “Percent of Total Population”), read the first number as the percentage of the total population who are girls 10-14 years old.

**Table 2**  
**Parental Survival Status and Residence in Household**  
**(Percent Distribution)**

Parental Survival Status					
	Both Parents Alive	Father Alive, Mother Dead	Mother Alive, Father Dead	Neither Parent Alive	Total
<b>Girls</b>					
10-14					
15-19					
<b>Data not collected for Paraguay</b>					
<b>Boys</b>					
10-14					
15-19					
Parents Resident in Household <sup>a</sup>					
	Both Parents in Household	Father Only in Household	Mother Only in Household	Neither Parent in Household	Total
<b>Girls</b>					
10-14	71.5	2.9	10.8	14.9	100.0
15-19	X	X	X	X	X
<b>Boys</b>					
10-14	71.7	3.8	12.3	12.3	100.0
15-19	X	X	X	X	X

<sup>a</sup> An adolescent is defined as not living with a parent if the parent is deceased or does not live in the household in which the adolescent resides.

**Guide to reading the table:**

- In the first column of percentages in the lower panel (under “Both Parents in Household”), read the first number as the percentage of girls 10-14 years old who live in households in which both parents reside.

**Table 3**  
**Characteristics of Head of Household<sup>a</sup>**  
**(Percent)**

	<b>Female Household Head</b>	<b>Non-Parent Household Head</b>
<b>Girls</b>		
10-14	12.3	22.7
15-19	13.8	X
<b>Boys</b>		
10-14	13.0	20.2
15-19	13.0	X

<sup>a</sup> The head of each household was identified by the member of that household responding to the household survey.

**Guide to reading the table:**

- In the first column of percentages (under “Female Household Head”), read the first number as the percentage of girls 10-14 years old who live in households with a female head.
- In the second column of percentages (under “Non-Parent Household Head”), read the first number as the percentage of girls 10-14 years old who live in households headed by someone other than their mother or father.

**Table 4**  
**Educational Enrollment and Attainment**

<b>Current Enrollment (Percent Distribution)</b>						
	<b>Not in School</b>	<b>In Primary<sup>a</sup></b>	<b>In Secondary<sup>b</sup></b>	<b>In Higher</b>	<b>Total</b>	
<b>Girls</b>						
10-14	17.4	72.0	10.6	0.0	100.0	
15-19	65.1	3.6	30.3	1.1	100.0	
<b>Boys</b>						
10-14	11.2	77.6	11.1	0.1	100.0	
15-19	63.6	5.9	28.7	1.8	100.0	
<b>Educational Attainment (Percent)</b>						
	<b>Completed 4+ Years</b>		<b>Completed Primary School</b>			
<b>Girls</b>						
15-19	90.4		72.7 <sup>c</sup>			
20-24	87.8		72.0			
25-29	85.1		68.8			
<b>Girls 15-29</b>						
Poorest 40%	X		X			
Middle 40%	X		X			
Richest 20%	X		X			
<b>Boys</b>						
15-19	88.0		72.1 <sup>c</sup>			
20-24	90.0		75.8			
25-29	85.5		69.6			
<b>Boys 15-29</b>						
Poorest 40%	X		X			
Middle 40%	X		X			
Richest 20%	X		X			

<sup>a</sup> Primary school in Paraguay consists of six grades.

<sup>b</sup> Secondary school in Paraguay consists of six grades.

<sup>c</sup> Because some 15-19-year-olds may still be attending primary school, caution should be used when comparing primary school completion rates of 15-19-year-olds to completion rates in older age groups or across countries.

**Guide to reading the table:**

- In the first column of percentages in the upper panel (under “Not in School”), read the first number as the percentage of girls 10-14 years old who are not currently enrolled in school.
- In the first column of percentages in the lower panel (under “Completed 4+ Years”), read the first number as the percentage of girls 15-19 years old who have completed four or more years of formal education.

**Table 5**  
**Educational Enrollment and Attainment in Urban Areas<sup>a</sup>**

	Current Enrollment (Percent Distribution)				Total
	Not in School	In Primary <sup>b</sup>	In Secondary <sup>c</sup>	In Higher	
<b>Girls</b>					
10-14	9.0	73.4	17.6	0.0	100.0
15-19	46.5	4.8	46.5	2.2	100.0
<b>Boys</b>					
10-14	6.2	75.2	18.5	0.0	100.0
15-19	43.7	6.7	45.9	3.7	100.0
Educational Attainment (Percent)					
	Completed 4+ Years	Completed Primary School			
<b>Girls</b>					
15-19	94.4	86.5 <sup>d</sup>			
20-24	94.2	85.7			
25-29	90.9	82.8			
<b>Girls 15-29</b>					
Poorest 40%	X	X			
Middle 40%	X	X			
Richest 20%	X	X			
<b>Boys</b>					
15-19	93.3	84.8 <sup>d</sup>			
20-24	95.7	90.3			
25-29	92.6	84.1			
<b>Boys 15-29</b>					
Poorest 40%	X	X			
Middle 40%	X	X			
Richest 20%	X	X			

<sup>a</sup> Refer to the DHS report cited in the Technical Notes for the definitions used for urban and rural areas.

<sup>b</sup> Primary school in Paraguay consists of six grades.

<sup>c</sup> Secondary school in Paraguay consists of six grades.

<sup>d</sup> Because some 15-19-year-olds may still be attending primary school, caution should be used when comparing primary school completion rates of 15-19-year-olds to completion rates in older age groups or across countries.

**Guide to reading the table:**

- In the first column of percentages in the upper panel (under “Not in School”), read the first number as the percentage of girls 10-14 years old living in urban areas who are not currently enrolled in school.
- In the first column of percentages in the lower panel (under “Completed 4+ Years”), read the first number as the percentage of girls 15-19 years old who have completed four or more years of formal education.



**Table 6**  
**Educational Enrollment and Attainment in Rural Areas<sup>a</sup>**

	Current Enrollment (Percent Distribution)				Total
	Not in School	In Primary <sup>b</sup>	In Secondary <sup>c</sup>	In Higher	
<b>Girls</b>					
10-14	24.9	70.8	4.4	0.0	100.0
15-19	83.7	2.3	14.0	0.0	100.0
<b>Boys</b>					
10-14	14.8	79.4	5.7	0.1	100.0
15-19	80.5	5.3	14.0	0.2	100.0

	Educational Attainment (Percent)	
	Completed 4+ Years	Completed Primary School
<b>Girls</b>		
15-19	86.4	59.0 <sup>d</sup>
20-24	79.1	53.1
25-29	75.8	46.4
<b>Girls 15-29</b>		
Poorest 40%	X	X
Middle 40%	X	X
Richest 20%	X	X
<b>Boys</b>		
15-19	83.7	61.6 <sup>d</sup>
20-24	84.9	62.9
25-29	76.7	51.8
<b>Boys 15-29</b>		
Poorest 40%	X	X
Middle 40%	X	X
Richest 20%	X	X

<sup>a</sup> Refer to the DHS report cited in the Technical Notes for the definitions used for urban and rural areas.

<sup>b</sup> Primary school in Paraguay consists of six grades.

<sup>c</sup> Secondary school in Paraguay consists of six grades.

<sup>d</sup> Because some 15-19-year-olds may still be attending primary school, caution should be used when comparing primary school completion rates of 15-19-year-olds to completion rates in older age groups or across countries.

**Guide to reading the table:**

- In the first column of percentages in the upper panel (under “Not in School”), read the first number as the percentage of girls 10-14 years old living in rural areas who are not currently enrolled in school.
- In the first column of percentages in the lower panel (under “Completed 4+ Years”), read the first number as the percentage of girls 15-19 years old who have completed four or more years of formal education.

**Table 7**  
**Educational Enrollment in Urban and Rural Areas<sup>a</sup>: Comparison Summary**

	Current Enrollment (Percent)			
	Not in School		In Primary <sup>b</sup>	
	Urban	Rural	Urban	Rural
<b>Girls</b>				
10-14	9.0	24.9	73.4	70.8
15-19	46.5	83.7	4.8	2.3
<b>Boys</b>				
10-14	6.2	14.8	75.2	79.4
15-19	43.7	80.5	6.7	5.3
	In Secondary <sup>c</sup>		In Higher	
	Urban	Rural	Urban	Rural
<b>Girls</b>				
10-14	17.6	4.4	0.0	0.0
15-19	46.5	14.0	2.2	0.0
<b>Boys</b>				
10-14	18.5	5.7	0.0	0.1
15-19	45.9	14.0	3.7	0.2

<sup>a</sup> Refer to the DHS report cited in the Technical Notes for the definitions used for urban and rural areas.

<sup>b</sup> Primary school in Paraguay consists of six grades.

<sup>c</sup> Secondary school in Paraguay consists of six grades.

**Guide to reading the table:**

- In the first column of percentages in the upper panel (under “Not in School: Urban”), read the first number as the percentage of girls 10-14 years old living in urban areas who are not currently enrolled in school.
- In the second column of percentages in the upper panel (under “Not in School: Rural”), read the first number as the percentage of girls 10-14 years old living in rural areas who are not currently enrolled in school.

**Table 8**  
**Marital Status**  
**(Percent Distribution)**

	Never-Married	Currently Married or in Union <sup>a</sup>	Separated, Divorced, or Widowed	Total
<b>Girls</b>				
10-14	X	X	X	X
15-19	84.6	14.2	1.3	100.0
<b>Boys</b>				
10-14	X	X	X	X
15-19	X	X	X	X
	Married by Age 15 (Percent) <sup>b</sup>	Married by Age 18 (Percent) <sup>b</sup>	Married by Age 20 (Percent) <sup>b</sup>	Median Age at First Marriage (Years)
<b>Girls</b>				
20-24	3.1	24.2	40.5	N/A <sup>c</sup>
25-29	3.2	25.8	44.7	20.8
<b>Boys</b>				
20-24	X	X	X	X
25-29	X	X	X	X

<sup>a</sup> "In union" refers to girls who are in unions of cohabitation.

<sup>b</sup> Defined as the percentage of girls in each age group who were married or in union by their 15<sup>th</sup>, 18<sup>th</sup>, or 20<sup>th</sup> birthday, respectively.

<sup>c</sup> Omitted because less than 50% of girls 20-24 years old were married by age 20.

**Guide to reading the table:**

- In the first column of percentages in the upper panel (under "Never-Married"), read the second number as the percentage of girls 15-19 years old who have never been married.
- In the first column of percentages in the lower panel (under "Married by Age 15"), read the first number as the percentage of girls 20-24 years old who were married by their 15<sup>th</sup> birthday.
- In the last column of percentages in the lower panel (under "Median Age at First Marriage"), read the second number as the age by which 50% of girls 25-29 years old were married.

**Table 9**  
**Sexuality and Childbearing**  
**(Percent)**

	Ever Had Sexual Intercourse			Sexually Active <sup>a</sup>			Of Sexually Active, the Percent Married
	Of Never-Married	Of Total	Median Age at 1 <sup>st</sup> Sex (Years)	Of Unmarried <sup>b</sup>	Of Married <sup>c</sup>	Of Total	
<b>Girls</b>							
10-14	X	X	X	X	X	X	X
15-19	17.2	30.0	N/A <sup>d</sup>	6.5	89.9	18.3	69.4
<b>Boys</b>							
10-14	X	X	X	X	X	X	X
15-19	X	X	X	X	X	X	X
	Ever Pregnant <sup>e</sup>			Ever Had Child			
	Of Never-Married	Of Ever-Married <sup>f</sup>	Of Total	Of Never-Married	Of Ever-Married <sup>f</sup>	Of Total	
<b>Girls</b>							
10-14	X	X	X	X	X	X	
15-19	5.6	78.1	16.8	5.0	63.7	14.1	

<sup>a</sup>“Sexually active” is defined as reporting having had sexual intercourse within the last 28 days.

<sup>b</sup>“Unmarried” refers to girls who are currently neither married nor in unions of cohabitation. It includes those who are separated, divorced, or widowed.

<sup>c</sup>“Married” refers to girls who are currently married or in unions of cohabitation.

<sup>d</sup>Omitted because less than 50% in the age group first had sexual intercourse by age 15.

<sup>e</sup>The DHS collected information on past live births and current pregnancy status at the time of the interview. Information was not collected on miscarriages, stillbirths, or abortions, and hence is not included in the calculation of “ever pregnant.” This statistic, therefore, is likely to be an underestimate of the true percentage of girls who have ever been pregnant.

<sup>f</sup>“Ever-married” refers to girls who are currently married, in union, separated, divorced, or widowed.

**Guide to reading the table:**

- In the first column of percentages in the upper panel (under “Ever Had Sexual Intercourse: Of Never-Married”), read the second number as the percentage of girls 15-19 years old who have had sexual intercourse among those who have never been married.
- In the seventh column of percentages in the upper panel (under “Of Sexually Active, the Percent Married”), read the second number as the percentage of girls 15-19 years old who are married, among those who report having had sex within the last 28 days.
- In the first column of percentages in the lower panel (under “Ever Pregnant: Of Never-Married”), read the second number as the percentage of girls 15-19 years old who have ever been pregnant, among those who have never been married.

**Table 10**  
**Educational Enrollment and Work<sup>a</sup> Status<sup>b</sup>**  
**(Percent Distribution)**

	<b>Not in School, Not Working</b>	<b>In School Only</b>	<b>Working Only</b>	<b>In School and Working</b>	<b>Total</b>
<b>Unmarried<sup>c</sup>, Without Children</b>					
<b>Girls</b>					
10-14	X	X	X	X	X
15-19	32.3	34.5	26.1	7.1	100.0
<b>Unmarried<sup>c</sup>, With Children</b>					
<b>Girls</b>					
10-14	X	X	X	X	X
15-19	62.6	1.6	35.8	0.0	100.0
<b>Married<sup>d</sup>, Without Children</b>					
<b>Girls</b>					
10-14	X	X	X	X	X
15-19	76.5	4.6	16.7	2.2	100.0
<b>Married<sup>d</sup>, With Children</b>					
<b>Girls</b>					
10-14	X	X	X	X	X
15-19	84.8	3.2	12.0	0.0	100.0

<sup>a</sup> Work is defined as both formal and informal, and excludes housework. It includes activities that are paid in cash or in kind, as well as work for a family farm or business.

<sup>b</sup> Information on work and parental status was not collected for boys.

<sup>c</sup> "Unmarried" refers to girls who are currently neither married nor in unions of cohabitation. It includes those who are separated, divorced, or widowed.

<sup>d</sup> "Married" refers to girls who are currently married or in unions of cohabitation.

**Guide to reading the table:**

- In the first column of percentages in the upper panel (under "Unmarried, Without Children: Not in School, Not Working"), read the second number as the percentage of unmarried girls 15-19 years old, without children, who are neither in school nor working.

**Table 11**  
**Awareness and Use of Modern Contraceptive Methods**  
**(Percent)**

	<b>Heard of a Modern Method of Contraception<sup>a</sup></b>	<b>Ever Used a Modern Method</b>	<b>Of Sexually Active<sup>b</sup>, Currently Using a Modern Method</b>
	<b>Never-Married</b>		
<b>Girls</b>			
10-14	X	X	X
15-19	83.6	2.9	12.8
<b>Boys</b>			
10-14	X	X	X
15-19	X	X	X
	<b>Ever-Married<sup>c</sup></b>		
<b>Girls</b>			
10-14	X	X	X
15-19	94.5	38.6	28.3
<b>Boys</b>			
10-14	X	X	X
15-19	X	X	X

<sup>a</sup> "Modern methods" of contraception include the oral contraceptive pill, intrauterine device, injections, diaphragm/foam/jelly, condom, female sterilization, male sterilization, and implants, including Norplant<sup>®</sup>.

<sup>b</sup> "Sexually active" is defined as reporting having had sexual intercourse within the last 28 days.

<sup>c</sup> The term "ever-married" includes girls who are currently married, in union, separated, divorced, or widowed.

**Guide to reading the table:**

- In the first column of percentages (under "Heard of a Modern Method of Contraception: Never-Married"), read the second number as the percentage of girls 15-19 years old who have heard of a modern method of contraception, among those who have never been married.
- In the third column of percentages (under "Of Sexually Active, Currently Using a Modern Method: Never-Married"), read the second number as the percentage of never-married girls 15-19 years old who currently use a modern method of contraception, among those who report having had sexual intercourse within the last 28 days.

**Table 12**  
**Awareness of HIV/AIDS**  
**(Percent)**

	Heard of HIV/AIDS			Know Someone Who Has or Has Died of HIV/AIDS
	Of Never-Married	Of Ever-Married	Of Total	
<b>Girls</b>				
10-14	X	X	X	X
15-19	X	X	X	X
<b>Boys</b>				
10-14	X	X	X	X
15-19	X	X	X	X
	Know a Healthy- Looking Person Can Have HIV/AIDS	Perceive Themselves to Be at Moderate or Great Risk of HIV/AIDS	Of Sexually Active <sup>a</sup> , Use Condom <sup>b</sup>	
<b>Girls</b>				
10-14	X	X	X	X
15-19	X	X	X	0.6
<b>Boys</b>				
10-14	X	X	X	X
15-19	X	X	X	X

<sup>a</sup> “Sexually active” is defined as reporting having had sexual intercourse within the last 28 days.

<sup>b</sup> “Use condom” refers to those who report condoms as their primary current contraceptive method. This statistic may be an undercount, since information on multiple method use was not collected.

**Guide to reading the table:**

- In the third column of percentages in the lower panel (under “Of Sexually Active, Use Condom”), read the second number as the percentage of girls 15-19 years old who report condom use as their primary current contraceptive method, among those who report having had sexual intercourse within the last 28 days.

**Table 13**  
**Experience with Sexually Transmitted Diseases (STDs)**  
**(Percent)**

	<b>Heard of an STD</b>	<b>Have Had an STD in Last 12 Months</b>	<b>Sought Advice During Last Episode of an STD</b>
<b>Girls</b>			
10-14			
15-19			
<b>Data not collected for Paraguay</b>			
<b>Boys</b>			
10-14			
15-19			



**Table 14**  
**Female Genital Circumcision**  
**(Percent)**

	<b>Circumcised</b>	<b>Median Age at Circumcision (Years)</b>	<b>Have Circumcised / Will Circumcise Eldest Daughter</b>
	<b>Never-Married</b>		
<b>Girls</b>			
10-14			
15-19	<b>Data not collected for Paraguay</b>		
20-24			
	<b>Ever-Married</b>		
<b>Girls</b>			
10-14			
15-19	<b>Data not collected for Paraguay</b>		
20-24			