

2002

Facts about adolescents from the Demographic and Health Survey—Statistical tables for program planning: Kyrgystan 1997

Population Council

Follow this and additional works at: https://knowledgecommons.popcouncil.org/departments_sbsr-pgy

How does access to this work benefit you? Let us know!

Recommended Citation

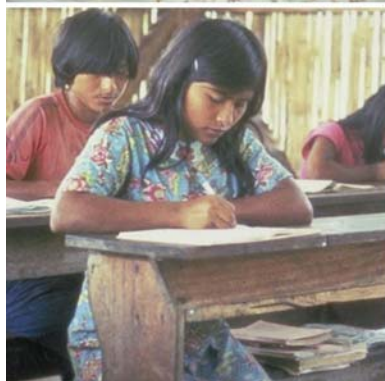
"Facts about adolescents from the Demographic and Health Survey—Statistical tables for program planning: Kyrgystan 1997." New York: Population Council, 2002.

This Report is brought to you for free and open access by the Population Council.

FACTS ABOUT ADOLESCENTS FROM THE DEMOGRAPHIC AND HEALTH SURVEY

Statistical Tables for Program Planning

KYRGYZSTAN 1997





One Dag Hammarskjold Plaza
New York, New York 10017
Telephone: 001 212-339-0500
Fax: 001 212-755-6052
e-mail: pubinfo@popcouncil.org
www.popcouncil.org

The Population Council is an international, nonprofit, nongovernmental institution that seeks to improve the well-being and reproductive health of current and future generations around the world and to help achieve a humane, equitable, and sustainable balance between people and resources. The Council conducts biomedical, social science, and public health research and helps build research capacities in developing countries. Established in 1952, the Council is governed by an international board of trustees. Its New York headquarters supports a global network of regional and country offices.

Copyright © 2002 by The Population Council, Inc.

Any part of this report may be copied or adapted to meet local needs without permission from the Population Council, provided that the parts copied are distributed free or at cost (not for profit) and that the source is identified. Citation should take the following form: "Facts about adolescents from the Demographic and Health Survey—Statistical tables for program planning: Kyrgyzstan 1997." 2002. New York: Population Council. Any commercial reproduction requires prior permission from the Population Council. The Population Council would appreciate receiving a copy of any materials in which the text is used.

Cover photos courtesy of M/MC Photoshare at www.jhuccp.org/mmc

Photograph credits

First row: Harvey Nelson, Aimee Centivany, Kathryn Wolford for Lutheran World Relief

Second row: Lutheran World Relief, Liz Gilbert for the Packard Foundation, Lauren Goodsmith

Third row: Lutheran World Relief, Lutheran World Relief, Liz Gilbert for the Packard Foundation

Foreword

The Population Council initiated its work on adolescents in earnest in the mid-1990s. At that time, those advocating greater attention to adolescent issues were concerned about adolescent fertility—particularly fertility outside of marriage—and, responding to the experiences of Western countries, about adolescent “risk-taking” behavior. As an international scientific organization with its mandate centered around the needs of developing countries, the Population Council sought a more nuanced and context-specific understanding of the opportunities and problems confronting adolescents in the developing world.

As a first step, the Council published a book titled *The Uncharted Passage: Girls’ Adolescence in the Developing World* (Mensch, Bruce, and Greene, 1998). In working with our colleagues inside and outside of the Council, at national and international levels, it became clear that information on adolescents, and the way data are organized, were limiting our ability to understand the diversity of their experiences or to develop programs to address that diversity. Even the words used to describe the 10-19-year-old age group (in English) presented an obstacle. Terms such as youth, adolescents, young people, and teenagers are gender-free. An age group spanning a decade was singularly inappropriate given the rapidity of transitions in this period; even five-year cohorts (10-14 and 15-19) are arguably unreasonably large.

While recognizing these limitations, we nonetheless saw the Demographic and Health Survey results as extremely useful to those seeking to understand and plan for adolescents, provided the data were organized with full understanding of their strengths and weaknesses. In the absence of data, many adolescent policies were implicitly based on the premise that the lives of adolescents in developing countries were like those of adolescents in Western countries; that is, mainly living at home with families, not working, in school, and unmarried. In fact there are significant numbers of young people in the West who do not fit this description, but even larger groups within the developing countries. Perhaps the starkest difference is the context of sexual activity: whereas the vast majority of sexually active adolescent girls in the West are unmarried, in the developing countries the vast majority are married.

In dialogue with colleagues at UNICEF, UNFPA, and PATH, and with the financial support of the United Nations Foundation, we have created tables to more clearly describe the diversity of the adolescent experience by drawing on the rich Demographic and Health Survey data. These tables are descriptive. We have included small points of commentary where something is particularly striking. We offer them to you for reflection, as a basis for developing programs, and as a basis, indeed, for arguing for an enrichment of the research attention devoted to the many transitions that occur between the ages of 10 and 19.

In addition to highlighting, wherever we could, salient dimensions and experience (e.g., schooling, work, and marital status) by age, gender, urban/rural, and economic class groupings, we also draw attention to adolescents’ living arrangements and the

shape of their families. Earlier work conducted cooperatively between the Council's International Programs and Policy Research Divisions highlighted some very surprising—often counterintuitive—facts about the “family.” Whether adolescents live with one, both, or neither parent, and whether they live with and are responsible for their younger siblings, significantly shape their schooling, work, and migration status. With increasing levels of rural-to-urban migration, and the AIDS epidemic, families under stress may tend to transfer adult burdens to their oldest children—especially to girls. Adolescent girls may be required to leave school or work for wages, sometimes in unsafe ways and away from their homes.

Another often neglected dimension of the “adolescent problematique” is the contrast between the experience of married and unmarried adolescents. Very often the experiences of married and unmarried adolescents are considered together—for example, on issues such as their level of information about and use of contraceptives. We believe that married and unmarried adolescents represent significantly different populations. Although differences between the groups may vary by topic, the difference between them is the point. In treating the adolescent population as homogeneous, the profile and needs of married adolescents have very often been completely ignored. Married girls are plausibly the most vulnerable adolescents. Detached from a supportive peer group and from their natal or native home, often married by arrangement and facing a first pregnancy, married adolescent girls deserve our attention. The tabulations presented for some countries provide preliminary and rudimentary evidence that married adolescents are, if not at greater disadvantage than their unmarried counterparts, at least different, and we should plan for those differences.

This project will be ongoing. As data for additional countries and more recent data for the countries covered here become available, we will produce new sets of tables. And as we identify other tables of potential interest we will include them. We welcome your feedback and hope you find these tables useful.

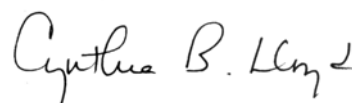
Finally, we would like to acknowledge the significant creative and analytic efforts of our colleagues in producing these tables. We thank Brian Pence, Carey Meyers, Erica Chong, Christine Pace, and Roberta Scheinman for their intellectual contributions and hard work in this undertaking.



Judith Bruce, Senior Advisor
Director, Gender, Family, and
Development Program
International Programs Division
Population Council



Paul Hewett, Project Director
Research Associate
Policy Research Division
Population Council



Cynthia B. Lloyd, Senior Advisor
Director of Social Science Research
Policy Research Division
Population Council

Technical Notes:

1. All tables in this report are calculated from data collected for the 1997 Kyrgyzstan Demographic and Health Survey (DHS), conducted by the Research Institute of Obstetrics and Pediatrics, Ministry of Health of the Kyrgyz Republic, and Macro International, Inc. The Kyrgyzstan DHS surveyed a nationally representative sample of 3,672 households. The information presented in Tables 1-7 is based on all usual residents within the age group(s) of the selected households. The calculations for Tables 8-12 are based on 3,848 women between ages 15 and 49 who responded to a more detailed individual questionnaire. Data on experience with sexually transmitted diseases and female genital circumcision were not collected for Kyrgyzstan.

More information on the design of and results from the 1997 Kyrgyzstan DHS is provided in the final report (Research Institute of Obstetrics and Pediatrics [Kyrgyzstan] and Macro International, Inc. *Kyrgyz Republic: Demographic and Health Survey 1997*. Calverton, Maryland: Research Institute of Obstetrics and Pediatrics and Macro International, Inc.). More information on the Demographic and Health Surveys, including reports, other publications, and original data, is available on the DHS Web site at <http://www.measuredhs.com/>.

2. The tables report values for which data are available for the 1997 Kyrgyzstan DHS. An X indicates that the information was not collected for that group in the 1997 survey.
3. Unless specifically designated as “percent distribution,” the cells represent percentages that do not sum to 100%. In most cases, the categories either are not mutually exclusive or do not exhaust the total population for the group. A guide to reading and interpreting the tables is included at the bottom of each page.
4. The measurement of economic status used to define the poorest 40%, middle 40%, and richest 20% of households in Tables 4-6 is based on a methodological approach discussed in Filmer, Deon and Lant Pritchett, 1999: “The Effect of Household Wealth on Educational Attainment: Evidence from 35 Countries,” *Population and Development Review*, vol. 25(1): 85-120. Derived from their work, indicators of household asset ownership (car, bicycle, television, etc.) and household characteristics (piped water, electricity, etc.) were used to create a single measure of economic status. Although the classification of economic status can be used for relative comparisons of socioeconomic groups within a country, comparisons of groups across countries are not appropriate.

List of Tables

Table 1	Urban-Rural Residence and Population Distribution
Table 2	Parental Survival Status and Residence in Household
Table 3	Characteristics of Head of Household
Table 4	Educational Enrollment and Attainment
Table 5	Educational Enrollment and Attainment in Urban Areas
Table 6	Educational Enrollment and Attainment in Rural Areas
Table 7	Educational Enrollment in Urban and Rural Areas: Comparison Summary
Table 8	Marital Status
Table 9	Sexuality and Childbearing
Table 10	Educational Enrollment and Work Status
Table 11	Awareness and Use of Modern Contraceptive Methods
Table 12	Awareness of HIV/AIDS
Table 13	Experience with Sexually Transmitted Diseases (<i>Data not collected for Kyrgyzstan</i>)
Table 14	Female Genital Circumcision (<i>Data not collected for Kyrgyzstan</i>)

A Summary of 1997 DHS Data on Adolescents in Kyrgyzstan

Table 1. Urban-Rural Residence and Population Distribution

- Adolescents ages 10-19 comprise more than one-fifth of Kyrgyzstan's total population.
- Approximately three-quarters of adolescents in Kyrgyzstan live in rural areas.

Table 1. Urban-Rural Residence Distribution

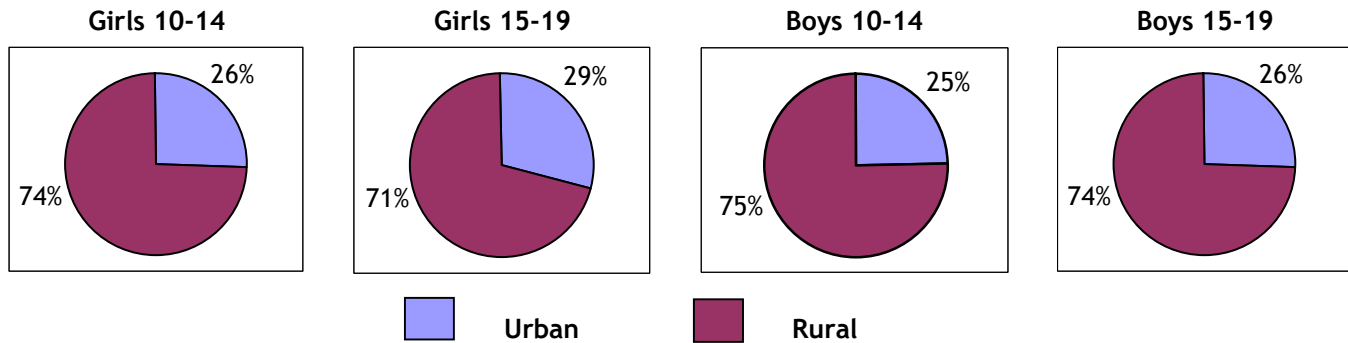


Table 2. Parental Survival Status and Residence in Household

- Nearly all 10-14-year-olds have both parents living, and about 80% live with both parents.
- Adolescents ages 10-14 living with only one parent are five times as likely to be living with only their mother than with only their father.
- Few adolescents 10-14 years old live in households where neither parent is present.

Table 2. Patterns of Parent/Child Co-residence

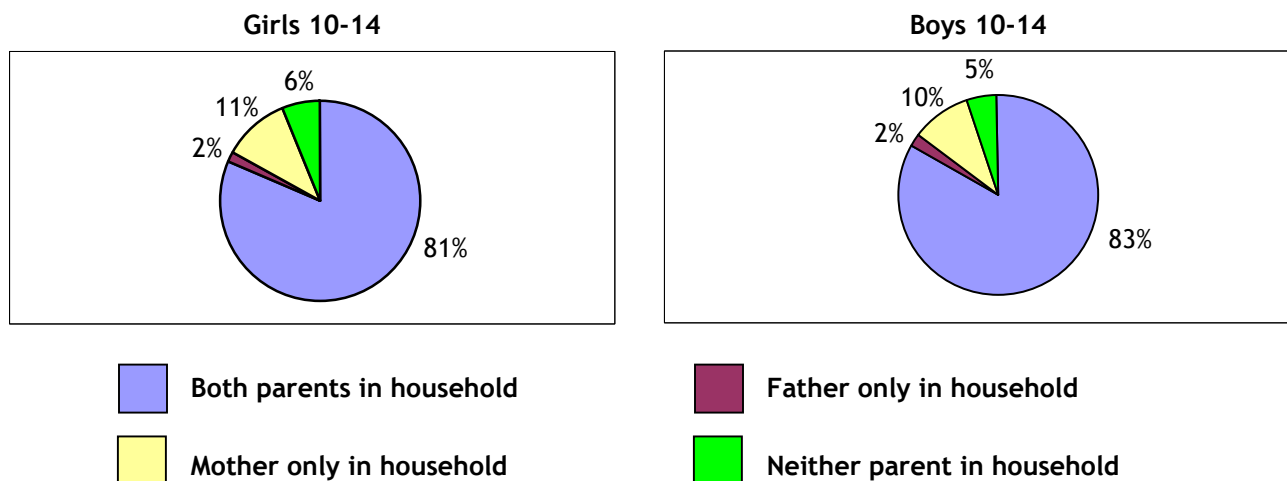


Table 3. Characteristics of Head of Household

- Roughly one out of six adolescents ages 10-19 lives in a female-headed household.
- Older adolescent girls are more likely than younger adolescent girls to live in a female-headed household.
- Girls 15-19 years old are significantly more likely than boys in the same age group to live in a female-headed household.
- About one-sixth of 10-14-year-olds live in households headed by someone other than a parent.

Table 4. Educational Enrollment and Attainment

- For both boys and girls, nearly all 10-14-year-olds and about half of 15-19-year-olds are in school.
- More than two out of five adolescents ages 10-19 are enrolled in secondary school.
- Virtually all adolescents ages 15-19 have completed primary school; this attainment level is consistent with that of older age groups.
- There is no discernible relationship between economic status and educational attainment.

Tables 5-7. Educational Enrollment and Attainment in Urban and Rural Areas

- More urban 15-19-year-olds are enrolled in school than rural 15-19-year-olds.
- Urban adolescents 15-19 years old are more than three times as likely as rural adolescents in the same age group to be pursuing higher education; urban girls are the most likely group to be pursuing higher education.
- Rates of completion of primary school are similarly high for boys and girls in both rural and urban areas and for all economic backgrounds.

Table 7. Educational Enrollment

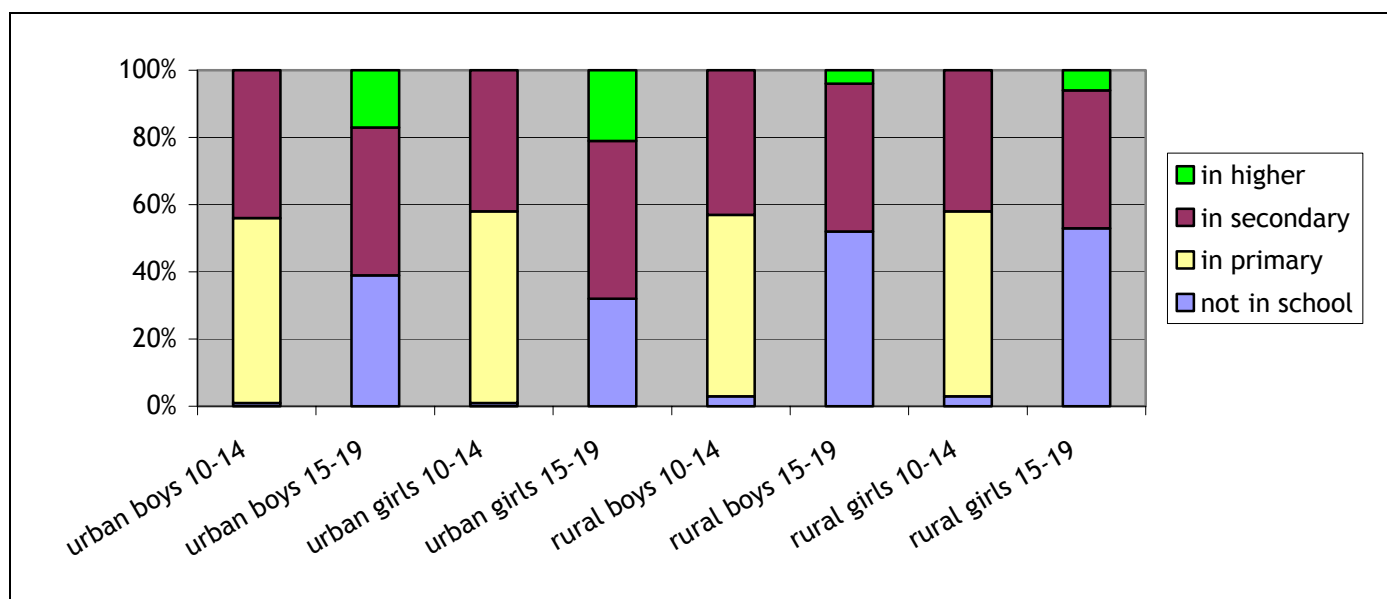


Table 8. Marital Status

- One out of eight girls 15-19 years old is currently married or in a cohabiting union.
- Half of girls ages 20-24 were married by age 19.5, while half of girls ages 25-29 were married by age 20.3.
- Significantly more girls ages 20-24 were married by ages 18 and 20 than girls ages 25-29.

Table 8. Age at Marriage

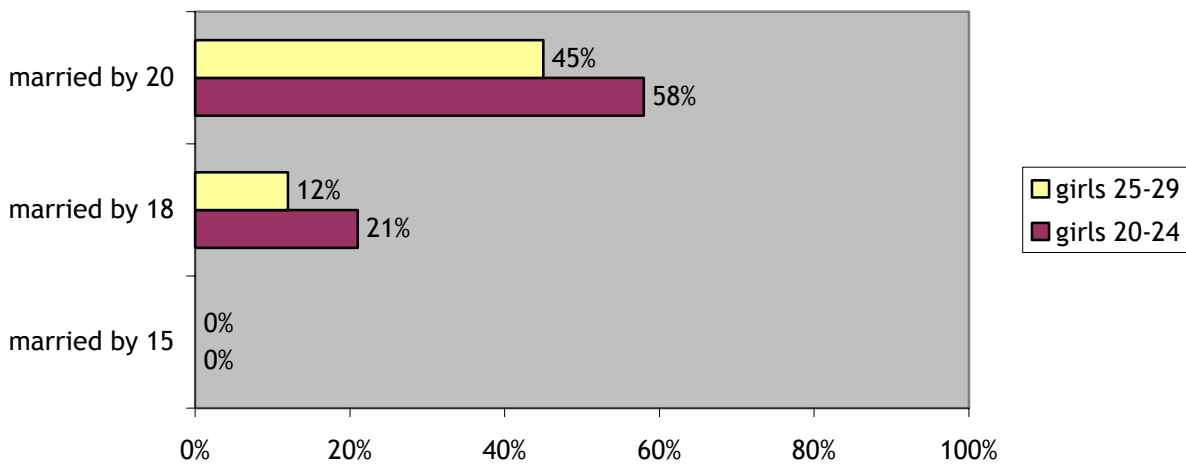


Table 9. Sexuality and Childbearing

- Fourteen percent of girls 15-19 years old have ever had sexual intercourse, and 11% are sexually active.
- Virtually all sexually active girls are married.
- Just less than half of married girls ages 15-19 have had a child. No unmarried girls in this age group reported having a child.

Table 10. Educational Enrollment and Work Status

- Unmarried girls without children 15-19 years old are almost four times more likely to be in school than married girls without children in the same age group.
- Work is not common for 15-19-year-old girls in Kyrgyzstan; 12% of married girls without children and 3% of married girls with children are working.
- The vast majority of married girls 15-19 years old are neither in school nor working.

Table 10. Educational Enrollment and Work Status of Girls 15-19 Years Old

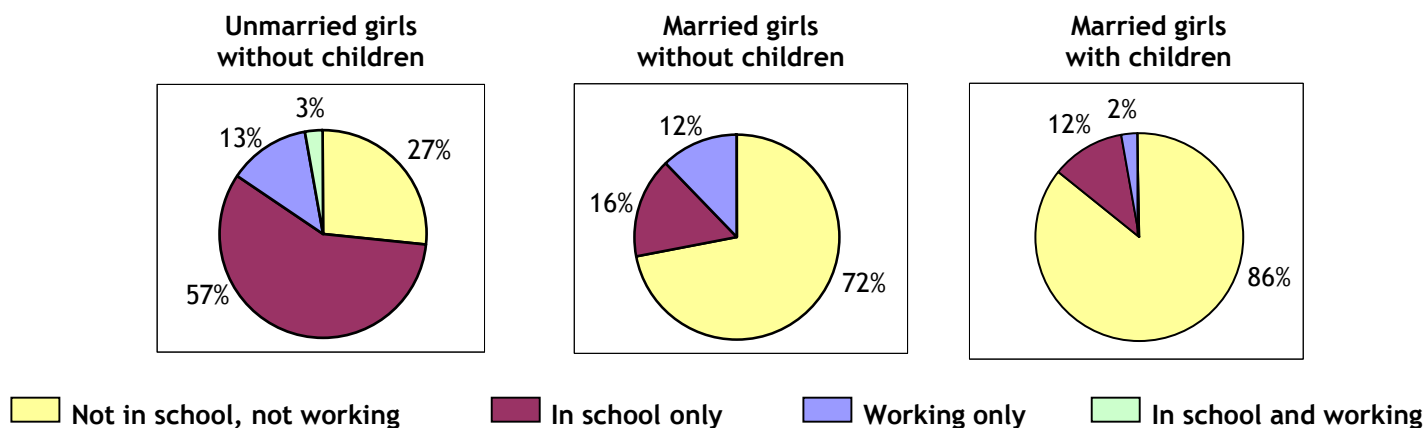


Table 11. Awareness and Use of Modern Contraceptive Methods

- Most girls 15-19 years old know of a modern method of contraception; ever-married girls are more knowledgeable than never-married girls.
- Twenty-nine percent of ever-married girls ages 15-19 have ever used a modern method of contraception, and 23% of sexually active ever-married girls are currently using a modern method.

Table 12. Awareness of HIV/AIDS

- One out of twelve sexually active girls 15-19 years old is using condoms as her primary method of contraception.

Table 1
Urban-Rural Residence and Population Distribution

	Percent Distribution			Percent of Total Population
	Urban ^a	Rural ^a	Total	
Girls				
10-14	25.6	74.4	100.0	6.4
15-19	29.1	70.9	100.0	4.6
Boys				
10-14	24.8	75.2	100.0	6.7
15-19	26.4	73.6	100.0	4.7

^a Refer to the DHS report cited in the Technical Notes for the definitions used for urban and rural areas.

Guide to reading the table:

- In the first column of percentages (under “Urban”), read the first number as the percentage of girls 10-14 years old who live in urban areas.
- In the fourth column of percentages (under “Percent of Total Population”), read the first number as the percentage of the total population who are girls 10-14 years old.

Table 2
Parental Survival Status and Residence in Household
(Percent Distribution)

Parental Survival Status					
	Both Parents Alive	Father Alive, Mother Dead	Mother Alive, Father Dead	Neither Parent Alive	Total
Girls					
10-14	94.0	1.2	4.4	0.5	100.0
15-19	X	X	X	X	X
Boys					
10-14	94.5	0.5	4.8	0.1	100.0
15-19	X	X	X	X	X
Parents Resident in Household^a					
	Both Parents in Household	Father Only in Household	Mother Only in Household	Neither Parent in Household	Total
Girls					
10-14	81.3	1.8	10.6	6.2	100.0
15-19	X	X	X	X	X
Boys					
10-14	83.1	2.2	9.9	4.9	100.0
15-19	X	X	X	X	X

^a An adolescent is defined as not living with a parent if the parent is deceased or does not live in the household in which the adolescent resides.

Guide to reading the table:

- In the first column of percentages in the upper panel (under “Both Parents Alive”), read the first number as the percentage of girls 10-14 years old whose parents are living.
- In the first column of percentages in the lower panel (under “Both Parents in Household”), read the first number as the percentage of girls 10-14 years old who live in households in which both parents reside.

Table 3
Characteristics of Head of Household^a
(Percent)

	Female Household Head	Non-Parent Household Head
Girls		
10-14	17.7	17.6
15-19	25.0	X
Boys		
10-14	15.2	14.1
15-19	15.1	X

^a The head of each household was identified by the member of that household responding to the household survey.

Guide to reading the table:

- In the first column of percentages (under “Female Household Head”), read the first number as the percentage of girls 10-14 years old who live in households with a female head.
- In the second column of percentages (under “Non-Parent Household Head”), read the first number as the percentage of girls 10-14 years old who live in households headed by someone other than their mother or father.

Table 4
Educational Enrollment and Attainment

Current Enrollment (Percent Distribution)						
	Not in School	In Primary^a	In Secondary^b	In Higher	Total	
Girls						
10-14	2.5	55.3	42.2	0.0	100.0	
15-19	47.0	0.0	43.1	9.9	100.0	
Boys						
10-14	2.9	54.1	43.0	0.0	100.0	
15-19	48.8	0.0	44.1	7.1	100.0	
Educational Attainment (Percent)						
	Completed 4+ Years		Completed Primary School			
Girls						
15-19	99.3		99.3 ^d			
20-24	99.7		99.7			
25-29	99.4		99.4			
Girls 15-29						
Poorest 40% ^c	99.2		99.1			
Middle 40%	99.5		99.5			
Richest 20%	100.0		100.0			
Boys						
15-19	99.1		99.0 ^d			
20-24	99.1		99.1			
25-29	99.4		99.1			
Boys 15-29						
Poorest 40% ^c	99.0		98.7			
Middle 40%	99.3		99.3			
Richest 20%	99.5		99.5			

^a Primary school in Kyrgyzstan consists of four grades.

^b Secondary school in Kyrgyzstan consists of seven grades.

^c For an explanation of these categories, refer to the Technical Notes at the beginning of this document.

^d Because some 15-19-year-olds may still be attending primary school, caution should be used when comparing primary school completion rates of 15-19-year-olds to completion rates in older age groups or across countries.

Guide to reading the table:

- In the first column of percentages in the upper panel (under “Not in School”), read the first number as the percentage of girls 10-14 years old who are not currently enrolled in school.
- In the first column of percentages in the lower panel, read the fourth number (opposite “Poorest 40%”) as the percentage of girls 15-29 years old in the poorest 40% of households who have completed four or more years of formal education.

Table 5
Educational Enrollment and Attainment in Urban Areas^a

	Current Enrollment (Percent Distribution)				Total
	Not in School	In Primary ^b	In Secondary ^c	In Higher	
Girls					
10-14	1.0	56.9	42.1	0.0	100.0
15-19	32.1	0.0	47.4	20.6	100.0
Boys					
10-14	1.4	55.0	43.6	0.0	100.0
15-19	39.0	0.0	43.8	17.2	100.0
Educational Attainment (Percent)					
	Completed 4+ Years		Completed Primary School		
Girls					
15-19	99.1		98.8 ^e		
20-24	100.0		100.0		
25-29	99.5		99.5		
Girls 15-29					
Poorest 40% ^d	97.6		96.9		
Middle 40%	99.6		99.6		
Richest 20%	100.0		100.0		
Boys					
15-19	97.8		97.8 ^e		
20-24	99.7		99.7		
25-29	99.6		98.4		
Boys 15-29					
Poorest 40% ^d	95.3		92.9		
Middle 40%	100.0		100.0		
Richest 20%	99.4		99.4		

^a Refer to the DHS report cited in the Technical Notes for the definitions used for urban and rural areas.

^b Primary school in Kyrgyzstan consists of four grades.

^c Secondary school in Kyrgyzstan consists of seven grades.

^d For an explanation of these categories, refer to the Technical Notes at the beginning of this document.

^e Because some 15-19-year-olds may still be attending primary school, caution should be used when comparing primary school completion rates of 15-19-year-olds to completion rates in older age groups or across countries.

Guide to reading the table:

- In the first column of percentages in the upper panel (under “Not in School”), read the first number as the percentage of girls 10-14 years old living in urban areas who are not currently enrolled in school.
- In the first column of percentages in the lower panel, read the fourth number (opposite “Poorest 40%”) as the percentage of girls 15-29 years old in the poorest 40% of households and living in urban areas who have completed four or more years of formal education.

Table 6
Educational Enrollment and Attainment in Rural Areas^a

	Current Enrollment (Percent Distribution)				Total
	Not in School	In Primary ^b	In Secondary ^c	In Higher	
Girls					
10-14	3.0	54.7	42.3	0.0	100.0
15-19	53.1	0.0	41.4	5.5	100.0
Boys					
10-14	3.4	53.8	42.8	0.0	100.0
15-19	52.2	0.0	44.3	3.5	100.0

	Educational Attainment (Percent)	
	Completed 4+ Years	Completed Primary School
Girls		
15-19	99.4	99.4 ^e
20-24	99.6	99.6
25-29	99.4	99.4
Girls 15-29		
Poorest 40% ^d	99.3	99.3
Middle 40%	99.5	99.5
Richest 20%	100.0	100.0
Boys		
15-19	99.6	99.5 ^e
20-24	98.9	98.9
25-29	99.3	99.3
Boys 15-29		
Poorest 40% ^d	99.3	99.3
Middle 40%	99.1	99.1
Richest 20%	100.0	100.0

^a Refer to the DHS report cited in the Technical Notes for the definitions used for urban and rural areas.

^b Primary school in Kyrgyzstan consists of four grades.

^c Secondary school in Kyrgyzstan consists of seven grades.

^d For an explanation of these categories, refer to the Technical Notes at the beginning of this document.

^e Because some 15-19-year-olds may still be attending primary school, caution should be used when comparing primary school completion rates of 15-19-year-olds to completion rates in older age groups or across countries.

Guide to reading the table:

- In the first column of percentages in the upper panel (under “Not in School”), read the first number as the percentage of girls 10-14 years old living in rural areas who are not currently enrolled in school.
- In the first column of percentages in the lower panel, read the fourth number (opposite “Poorest 40%”) as the percentage of girls 15-29 years old in the poorest 40% of households and living in rural areas who have completed four or more years of formal education.

Table 7
Educational Enrollment in Urban and Rural Areas^a: Comparison Summary

	Current Enrollment (Percent)			
	Not in School		In Primary ^b	
	Urban	Rural	Urban	Rural
Girls				
10-14	1.0	3.0	56.9	54.7
15-19	32.1	53.1	0.0	0.0
Boys				
10-14	1.4	3.4	55.0	53.8
15-19	39.0	52.2	0.0	0.0
	In Secondary ^c		In Higher	
	Urban	Rural	Urban	Rural
	Girls			
10-14	42.1	42.3	0.0	0.0
15-19	47.4	41.4	20.6	5.5
Boys				
10-14	43.6	42.8	0.0	0.0
15-19	43.8	44.3	17.2	3.5

^a Refer to the DHS report cited in the Technical Notes for the definitions used for urban and rural areas.

^b Primary school in Kyrgyzstan consists of four grades.

^c Secondary school in Kyrgyzstan consists of seven grades.

Guide to reading the table:

- In the first column of percentages in the upper panel (under “Not in School: Urban”), read the first number as the percentage of girls 10-14 years old living in urban areas who are not currently enrolled in school.
- In the second column of percentages in the upper panel (under “Not in School: Rural”), read the first number as the percentage of girls 10-14 years old living in rural areas who are not currently enrolled in school.

Table 8
Marital Status
(Percent Distribution)

	Never-Married	Currently Married or in Union ^a	Separated, Divorced, or Widowed	Total
Girls				
10-14	X	X	X	X
15-19	86.3	12.3	1.4	100.0
Boys				
10-14	X	X	X	X
15-19	X	X	X	X
	Married by Age 15 (Percent) ^b	Married by Age 18 (Percent) ^b	Married by Age 20 (Percent) ^b	Median Age at First Marriage (Years)
Girls				
20-24	0.1	21.2	58.4	19.5
25-29	0.0	11.6	45.0	20.3
Boys				
20-24	X	X	X	X
25-29	X	X	X	X

^a "In union" refers to girls who are in unions of cohabitation.

^b Defined as the percentage of girls in each age group who were married or in union by their 15th, 18th, or 20th birthday, respectively.

Guide to reading the table:

- In the first column of percentages in the upper panel (under "Never-Married"), read the second number as the percentage of girls 15-19 years old who have never been married.
- In the first column of percentages in the lower panel (under "Married by Age 15"), read the first number as the percentage of girls 20-24 years old who were married by their 15th birthday.
- In the last column of percentages in the lower panel (under "Median Age at First Marriage"), read the first number as the age by which 50% of girls 20-24 years old were married.

**Table 9
Sexuality and Childbearing
(Percent)**

	Ever Had Sexual Intercourse			Sexually Active ^a			Of Sexually Active, the Percent Married
	Of Never-Married	Of Total	Median Age at 1 st Sex (Years)	Of Unmarried ^b	Of Married ^c	Of Total	
Girls							
10-14	X	X	X	X	X	X	X
15-19	0.7	14.3	N/A ^d	0.4	87.7	11.1	96.9
Boys							
10-14	X	X	X	X	X	X	X
15-19	X	X	X	X	X	X	X
	Ever Pregnant ^e			Ever Had Child			
	Of Never-Married	Of Ever-Married ^f	Of Total	Of Never-Married	Of Ever-Married ^f	Of Total	
Girls							
10-14	X	X	X	X	X	X	
15-19	0.0	68.8	9.4	0.0	46.4	6.3	

^a“Sexually active” is defined as reporting having had sexual intercourse within the last 28 days.

^b“Unmarried” refers to girls who are currently neither married nor in unions of cohabitation. It includes those who are separated, divorced, or widowed.

^c“Married” refers to girls who are currently married or in unions of cohabitation.

^d Omitted because less than 50% in the age group first had sexual intercourse by age 15.

^e The DHS collected information on past live births and current pregnancy status at the time of the interview. Information was not collected on miscarriages, stillbirths, or abortions, and hence is not included in the calculation of “ever pregnant.” This statistic, therefore, is likely to be an underestimate of the true percentage of girls who have ever been pregnant.

^f“Ever-married” refers to girls who are currently married, in union, separated, divorced, or widowed.

Guide to reading the table:

- In the first column of percentages in the upper panel (under “Ever Had Sexual Intercourse: Of Never-Married”), read the second number as the percentage of girls 15-19 years old who have had sexual intercourse among those who have never been married.
- In the seventh column of percentages in the upper panel (under “Of Sexually Active, the Percent Married”), read the second number as the percentage of girls 15-19 years old who are married, among those who report having had sex within the last 28 days.
- In the first column of percentages in the lower panel (under “Ever Pregnant: Of Never-Married”), read the second number as the percentage of girls 15-19 years old who have ever been pregnant, among those who have never been married.

Table 10
Educational Enrollment and Work^a Status^b
(Percent Distribution)

	Not in School, Not Working	In School Only	Working Only	In School and Working	Total
Unmarried^c, Without Children					
Girls					
10-14	X	X	X	X	X
15-19	26.8	57.6	12.8	2.8	100.0
Unmarried^c, With Children					
Girls					
10-14	X	X	X	X	X
15-19	N/A ^d	N/A ^d	N/A ^d	N/A ^d	N/A ^d
Married^c, Without Children					
Girls					
10-14	X	X	X	X	X
15-19	72.0	15.8	12.1	0.0	100.0
Married^c, With Children					
Girls					
10-14	X	X	X	X	X
15-19	85.8	11.6	2.5	0.0	100.0

^a Work is defined as both formal and informal, and excludes housework. It includes activities that are paid in cash or in kind, as well as work for a family farm or business.

^b Information on work and parental status was not collected for boys.

^c "Unmarried" refers to girls who are currently neither married nor in unions of cohabitation. It includes those who are separated, divorced, or widowed.

^d No unmarried girls 15-19 years old reported having children.

^e "Married" refers to girls who are currently married or in unions of cohabitation.

Guide to reading the table:

- In the first column of percentages in the upper panel (under "Unmarried, Without Children: Not in School, Not Working"), read the second number as the percentage of unmarried girls 15-19 years old, without children, who are neither in school nor working.

Table 11
Awareness and Use of Modern Contraceptive Methods
(Percent)

	Heard of a Modern Method of Contraception^a	Ever Used a Modern Method	Of Sexually Active^b, Currently Using a Modern Method
	Never-Married		
Girls			
10-14	X	X	X
15-19	85.5	0.6	100.0 ^c
Boys			
10-14	X	X	X
15-19	X	X	X
	Ever-Married^d		
Girls			
10-14	X	X	X
15-19	97.6	28.8	22.7
Boys			
10-14	X	X	X
15-19	X	X	X

^a "Modern methods" of contraception include the oral contraceptive pill, intrauterine device, injections, diaphragm/foam/jelly, condom, female sterilization, male sterilization, and implants, including Norplant[®].

^b "Sexually active" is defined as reporting having had sexual intercourse within the last 28 days.

^c Based on fewer than 30 unweighted cases.

^d The term "ever-married" includes girls who are currently married, in union, separated, divorced, or widowed.

Guide to reading the table:

- In the first column of percentages (under "Heard of a Modern Method of Contraception: Never-Married"), read the second number as the percentage of girls 15-19 years old who have heard of a modern method of contraception, among those who have never been married.
- In the third column of percentages (under "Of Sexually Active, Currently Using a Modern Method: Never-Married"), read the second number as the percentage of never-married girls 15-19 years old who currently use a modern method of contraception, among those who report having had sexual intercourse within the last 28 days.

Table 12
Awareness of HIV/AIDS
(Percent)

	Heard of HIV/AIDS			Know Someone Who Has or Has Died of HIV/AIDS
	Of Never-Married	Of Ever-Married	Of Total	
Girls				
10-14	X	X	X	X
15-19	X	X	X	X
Boys				
10-14	X	X	X	X
15-19	X	X	X	X
	Know a Healthy- Looking Person Can Have HIV/AIDS	Perceive Themselves to Be at Moderate or Great Risk of HIV/AIDS	Of Sexually Active ^a , Use Condom ^b	
Girls				
10-14	X	X	X	X
15-19	X	X	X	8.4
Boys				
10-14	X	X	X	X
15-19	X	X	X	X

^a "Sexually active" is defined as reporting having had sexual intercourse within the last 28 days.

^b "Use condom" refers to those who report condoms as their primary current contraceptive method. This statistic may be an undercount, since information on multiple method use was not collected.

Guide to reading the table:

- In the third column of percentages in the lower panel (under "Of Sexually Active, Use Condom"), read the second number as the percentage of girls 15-19 years old who report condom use as their primary current contraceptive method, among those who report having had sexual intercourse within the last 28 days.

Table 13
Experience with Sexually Transmitted Diseases (STDs)
(Percent)

	Heard of an STD	Have Had an STD in Last 12 Months	Sought Advice During Last Episode of an STD
Girls			
10-14			
15-19			
Data not collected for Kyrgyzstan			
Boys			
10-14			
15-19			

**Table 14
Female Genital Circumcision
(Percent)**

	Circumcised	Median Age at Circumcision (Years)	Have Circumcised / Will Circumcise Eldest Daughter
		Never-Married	
Girls			
10-14			
15-19		Data not collected for Kyrgyzstan	
20-24			
		Ever-Married	
Girls			
10-14			
15-19		Data not collected for Kyrgyzstan	
20-24			