

---

2002

## **Facts about adolescents from the Demographic and Health Survey—Statistical tables for program planning: Comoros 1996**

Population Council

Follow this and additional works at: [https://knowledgecommons.popcouncil.org/departments\\_sbsr-pgy](https://knowledgecommons.popcouncil.org/departments_sbsr-pgy)

**How does access to this work benefit you? Let us know!**

---

### **Recommended Citation**

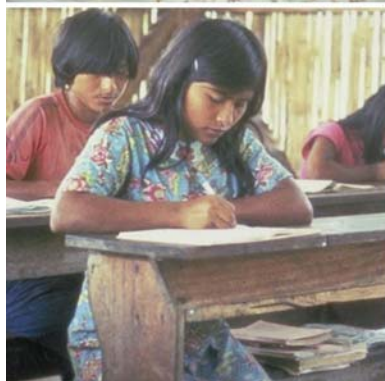
"Facts about adolescents from the Demographic and Health Survey—Statistical tables for program planning: Comoros 1996." New York: Population Council, 2002.

This Report is brought to you for free and open access by the Population Council.

# FACTS ABOUT ADOLESCENTS FROM THE DEMOGRAPHIC AND HEALTH SURVEY

## Statistical Tables for Program Planning

### COMOROS 1996





One Dag Hammarskjold Plaza  
New York, New York 10017  
Telephone: 001 212-339-0500  
Fax: 001 212-755-6052  
e-mail: [pubinfo@popcouncil.org](mailto:pubinfo@popcouncil.org)  
[www.popcouncil.org](http://www.popcouncil.org)

The Population Council is an international, nonprofit, nongovernmental institution that seeks to improve the well-being and reproductive health of current and future generations around the world and to help achieve a humane, equitable, and sustainable balance between people and resources. The Council conducts biomedical, social science, and public health research and helps build research capacities in developing countries. Established in 1952, the Council is governed by an international board of trustees. Its New York headquarters supports a global network of regional and country offices.

Copyright © 2002 by The Population Council, Inc.

Any part of this report may be copied or adapted to meet local needs without permission from the Population Council, provided that the parts copied are distributed free or at cost (not for profit) and that the source is identified. Citation should take the following form: "Facts about adolescents from the Demographic and Health Survey—Statistical tables for program planning: Comoros 1996." 2002. New York: Population Council. Any commercial reproduction requires prior permission from the Population Council. The Population Council would appreciate receiving a copy of any materials in which the text is used.

---

Cover photos courtesy of M/MC Photoshare at [www.jhuccp.org/mmc](http://www.jhuccp.org/mmc)

Photograph credits

First row: Harvey Nelson, Aimee Centivany, Kathryn Wolford for Lutheran World Relief

Second row: Lutheran World Relief, Liz Gilbert for the Packard Foundation, Lauren Goodsmith

Third row: Lutheran World Relief, Lutheran World Relief, Liz Gilbert for the Packard Foundation

## Foreword

The Population Council initiated its work on adolescents in earnest in the mid-1990s. At that time, those advocating greater attention to adolescent issues were concerned about adolescent fertility—particularly fertility outside of marriage—and, responding to the experiences of Western countries, about adolescent “risk-taking” behavior. As an international scientific organization with its mandate centered around the needs of developing countries, the Population Council sought a more nuanced and context-specific understanding of the opportunities and problems confronting adolescents in the developing world.

As a first step, the Council published a book titled *The Uncharted Passage: Girls’ Adolescence in the Developing World* (Mensch, Bruce, and Greene, 1998). In working with our colleagues inside and outside of the Council, at national and international levels, it became clear that information on adolescents, and the way data are organized, were limiting our ability to understand the diversity of their experiences or to develop programs to address that diversity. Even the words used to describe the 10-19-year-old age group (in English) presented an obstacle. Terms such as youth, adolescents, young people, and teenagers are gender-free. An age group spanning a decade was singularly inappropriate given the rapidity of transitions in this period; even five-year cohorts (10-14 and 15-19) are arguably unreasonably large.

While recognizing these limitations, we nonetheless saw the Demographic and Health Survey results as extremely useful to those seeking to understand and plan for adolescents, provided the data were organized with full understanding of their strengths and weaknesses. In the absence of data, many adolescent policies were implicitly based on the premise that the lives of adolescents in developing countries were like those of adolescents in Western countries; that is, mainly living at home with families, not working, in school, and unmarried. In fact there are significant numbers of young people in the West who do not fit this description, but even larger groups within the developing countries. Perhaps the starkest difference is the context of sexual activity: whereas the vast majority of sexually active adolescent girls in the West are unmarried, in the developing countries the vast majority are married.

In dialogue with colleagues at UNICEF, UNFPA, and PATH, and with the financial support of the United Nations Foundation, we have created tables to more clearly describe the diversity of the adolescent experience by drawing on the rich Demographic and Health Survey data. These tables are descriptive. We have included small points of commentary where something is particularly striking. We offer them to you for reflection, as a basis for developing programs, and as a basis, indeed, for arguing for an enrichment of the research attention devoted to the many transitions that occur between the ages of 10 and 19.

In addition to highlighting, wherever we could, salient dimensions and experience (e.g., schooling, work, and marital status) by age, gender, urban/rural, and economic class groupings, we also draw attention to adolescents’ living arrangements and the shape of their families. Earlier work conducted cooperatively between the Council’s

International Programs and Policy Research Divisions highlighted some very surprising—often counterintuitive—facts about the “family.” Whether adolescents live with one, both, or neither parent, and whether they live with and are responsible for their younger siblings, significantly shape their schooling, work, and migration status. With increasing levels of rural-to-urban migration, and the AIDS epidemic, families under stress may tend to transfer adult burdens to their oldest children—especially to girls. Adolescent girls may be required to leave school or work for wages, sometimes in unsafe ways and away from their homes.

Another often neglected dimension of the “adolescent problematique” is the contrast between the experience of married and unmarried adolescents. Very often the experiences of married and unmarried adolescents are considered together—for example, on issues such as their level of information about and use of contraceptives. We believe that married and unmarried adolescents represent significantly different populations. Although differences between the groups may vary by topic, the difference between them is the point. In treating the adolescent population as homogeneous, the profile and needs of married adolescents have very often been completely ignored. Married girls are plausibly the most vulnerable adolescents. Detached from a supportive peer group and from their natal or native home, often married by arrangement and facing a first pregnancy, married adolescent girls deserve our attention. The tabulations presented for some countries provide preliminary and rudimentary evidence that married adolescents are, if not at greater disadvantage than their unmarried counterparts, at least different, and we should plan for those differences.

This project will be ongoing. As data for additional countries and more recent data for the countries covered here become available, we will produce new sets of tables. And as we identify other tables of potential interest we will include them. We welcome your feedback and hope you find these tables useful.

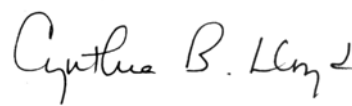
Finally, we would like to acknowledge the significant creative and analytic efforts of our colleagues in producing these tables. We thank Brian Pence, Carey Meyers, Erica Chong, Christine Pace, and Roberta Scheinman for their intellectual contributions and hard work in this undertaking.



**Judith Bruce, Senior Advisor**  
Director, Gender, Family, and  
Development Program  
International Programs Division  
Population Council



**Paul Hewett, Project Director**  
Research Associate  
Policy Research Division  
Population Council



**Cynthia B. Lloyd, Senior Advisor**  
Director of Social Science Research  
Policy Research Division  
Population Council

## Technical Notes:

1. All tables in this report are calculated from data collected for the 1996 Comoros Demographic and Health Survey (DHS), conducted by the Centre National de Documentation et de Recherche Scientifique and Macro International, Inc. The Comoros DHS surveyed a nationally representative sample of 2,252 households. The information presented in Tables 1-7 is based on all usual residents within the age group(s) of the selected households. The calculations for Tables 8-12 are based on 3,050 women between ages 15 and 49 who responded to a more detailed individual questionnaire. Data on experience with sexually transmitted diseases and female genital circumcision were not collected for Comoros.

More information on the design of and results from the 1996 Comoros DHS is provided in the final report (Mondoha, Kassim A., Juan Schoemaker, and Monique Barrere. 1997. *Enquête Démographique et de Santé, Comores 1996*. Calverton, Maryland: Centre National de Documentation et de Recherche Scientifique and Macro International, Inc.). More information on the Demographic and Health Surveys, including reports, other publications, and original data, is available on the DHS Web site at <http://www.measuredhs.com/>.

2. The tables report values for which data are available for the 1996 Comoros DHS. An X indicates that the information was not collected for that group in the 1996 survey.
3. Unless specifically designated as “percent distribution,” the cells represent percentages that do not sum to 100%. In most cases, the categories either are not mutually exclusive or do not exhaust the total population for the group. A guide to reading and interpreting the tables is included at the bottom of each page.
4. The measurement of economic status used to define the poorest 40%, middle 40%, and richest 20% of households in Tables 4-6 is based on a methodological approach discussed in Filmer, Deon and Lant Pritchett, 1999: “The Effect of Household Wealth on Educational Attainment: Evidence from 35 Countries,” *Population and Development Review*, vol. 25(1): 85-120. Derived from their work, indicators of household asset ownership (car, bicycle, television, etc.) and household characteristics (piped water, electricity, etc.) were used to create a single measure of economic status. Although the classification of economic status can be used for relative comparisons of socioeconomic groups within a country, comparisons of groups across countries are not appropriate.

## List of Tables

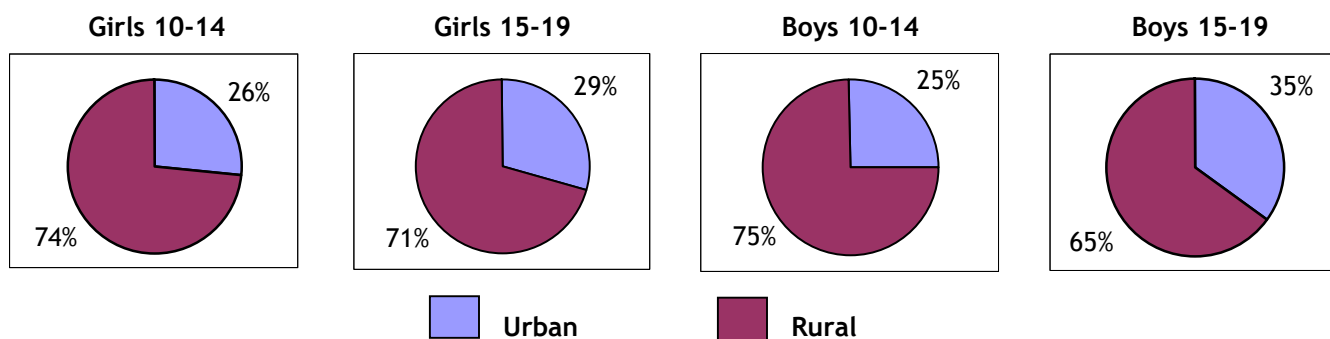
<b>Table 1</b>	Urban-Rural Residence and Population Distribution
<b>Table 2</b>	Parental Survival Status and Residence in Household
<b>Table 3</b>	Characteristics of Head of Household
<b>Table 4</b>	Educational Enrollment and Attainment
<b>Table 5</b>	Educational Enrollment and Attainment in Urban Areas
<b>Table 6</b>	Educational Enrollment and Attainment in Rural Areas
<b>Table 7</b>	Educational Enrollment in Urban and Rural Areas: Comparison Summary
<b>Table 8</b>	Marital Status
<b>Table 9</b>	Sexuality and Childbearing
<b>Table 10</b>	Educational Enrollment and Work Status
<b>Table 11</b>	Awareness and Use of Modern Contraceptive Methods
<b>Table 12</b>	Awareness of HIV/AIDS
<b>Table 13</b>	Experience with Sexually Transmitted Diseases ( <i>Data not collected for Comoros</i> )
<b>Table 14</b>	Female Genital Circumcision ( <i>Data not collected for Comoros</i> )

*A Summary of 1996 DHS Data on Adolescents in Comoros*

**Table 1. Urban-Rural Residence and Population Distribution**

- Adolescents ages 10-19 comprise more than one-quarter of the population in Comoros.
- Over two-thirds of adolescents in Comoros live in rural areas.
- A greater percentage of 15-19-year-old boys live in urban areas than 10-14-year-old boys; this trend is less pronounced among girls.

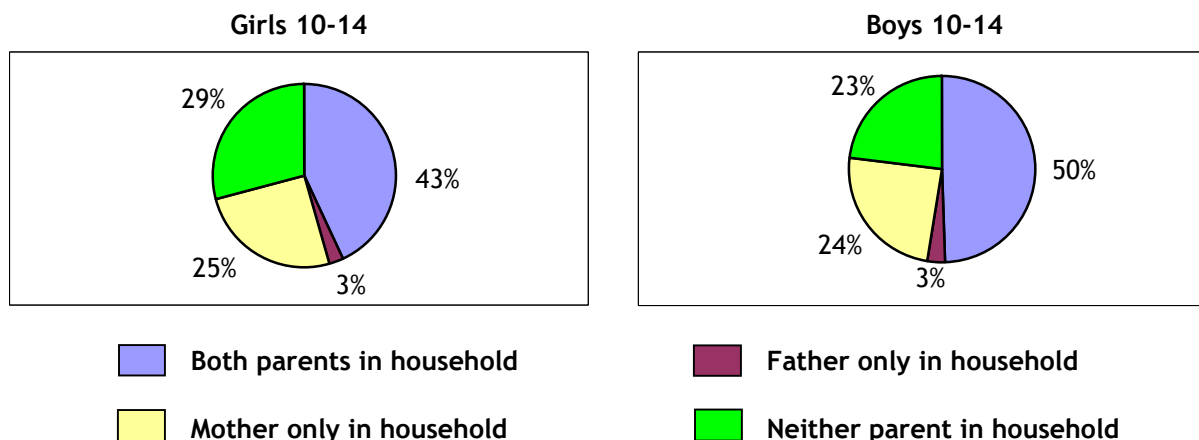
**Table 1. Urban-Rural Residence Distribution**



**Table 2. Parental Survival Status and Residence in Household**

- Nine out of ten adolescents ages 10-14 have both parents living, but less than half live with both parents.
- Adolescents ages 10-14 who live with only one parent are about eight times more likely to live with only their mother than with only their father.
- Among 10-14-year-olds, girls are more likely than boys to live with neither parent (29% vs. 23%).

**Table 2. Patterns of Parent/Child Co-residence**





### Table 3. Characteristics of Head of Household

- Nearly one-third of adolescents live in female-headed households.
- Girls ages 10-14 are more likely than boys in the same age group to live in a household headed by someone other than a parent (44% vs. 37%).

### Table 4. Educational Enrollment and Attainment

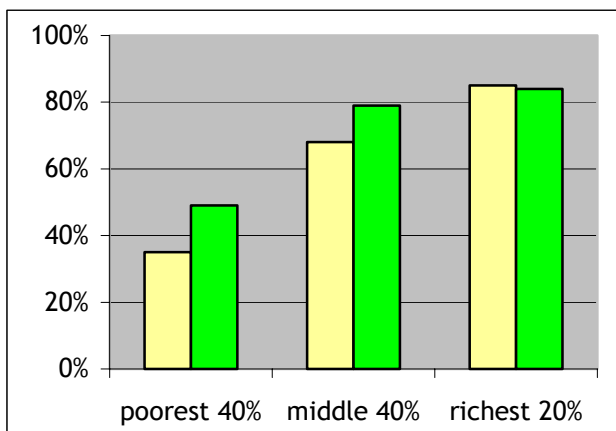
- Fewer girls than boys are enrolled in school, and girls are less likely than boys to complete four or more years of school.
- The percentage of adolescents completing four or more years of school has not changed much in the last ten years.
- There is a positive relationship between economic status and educational attainment for both boys and girls; the relationship is stronger among girls than boys.

### Tables 5-7. Educational Enrollment and Attainment in Urban and Rural Areas

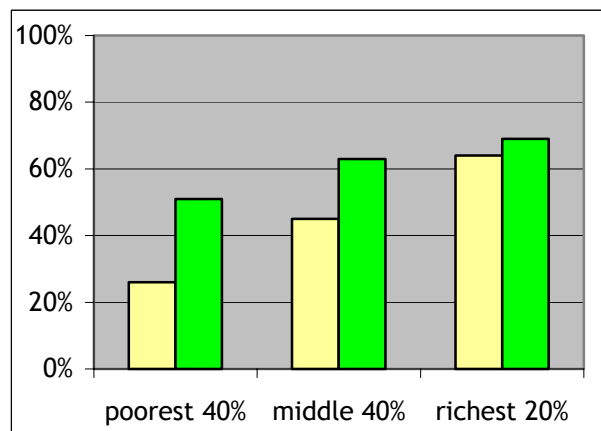
- A greater percentage of urban adolescents are in school than rural adolescents. This difference is particularly striking when comparing secondary school enrollment among 15-19-year-olds; urban adolescents are two to three times more likely than rural adolescents to be enrolled in secondary school.
- More urban adolescents complete four or more years of school than rural adolescents. For instance, 71% of urban girls ages 15-19 completed four or more years compared to 40% of rural girls in the same age group.
- The relationship between economic status and educational attainment is similarly strong in both rural and urban areas.

### Tables 5 and 6. Educational Attainment

Urban youth 15-29 completing 4+ years of school



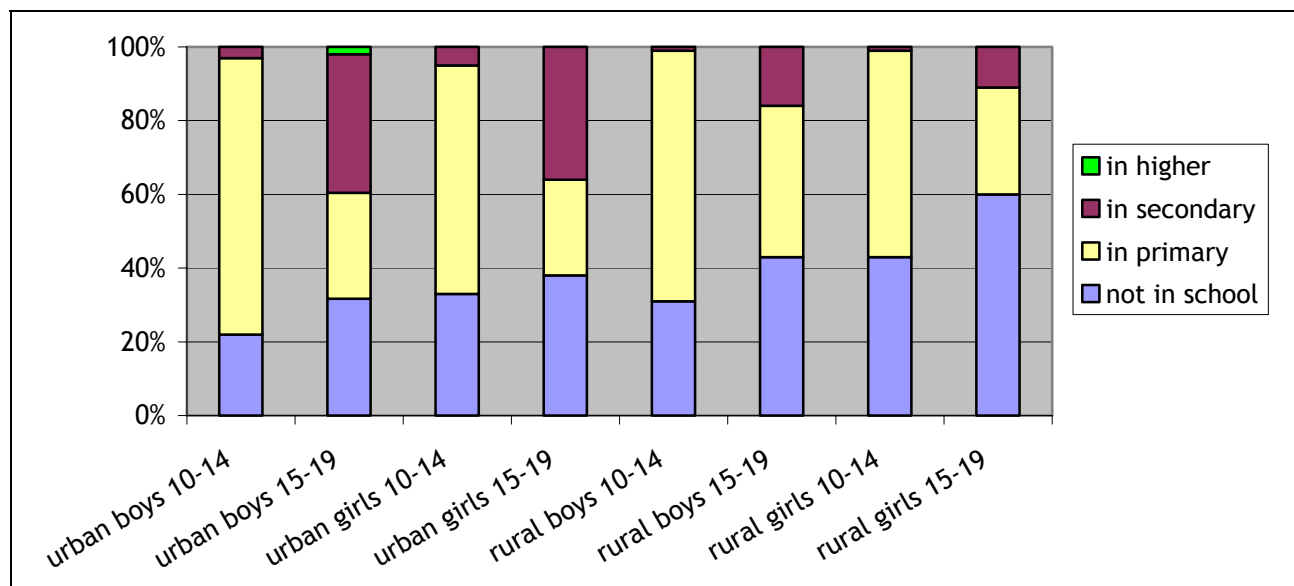
Rural youth 15-29 completing 4+ years of school



Girls

Boys

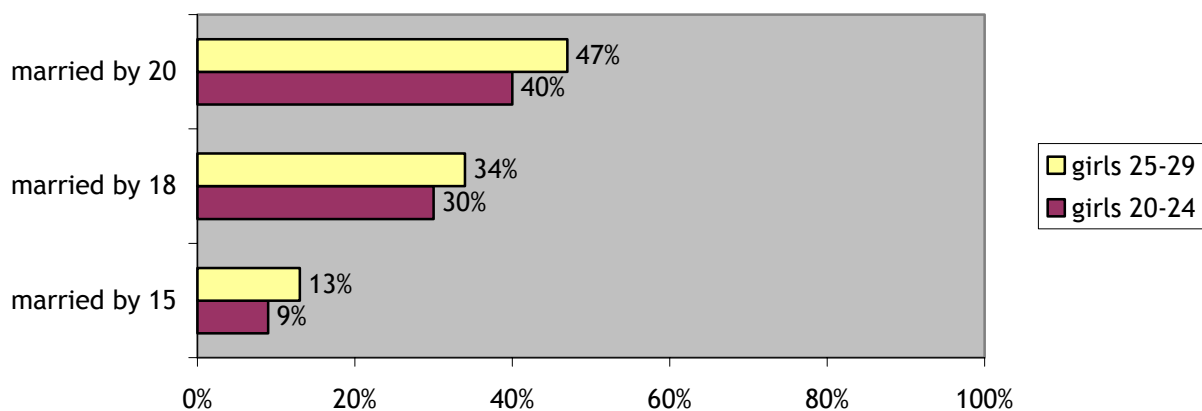
**Table 7. Educational Enrollment**



**Table 8. Marital Status**

- About one out of ten girls 15-19 years old is currently married or in a cohabiting union; about 9% of those currently married are in polygamous unions.
- Half of women 25-29 years old were married by age 20.4.
- Slightly greater percentages of girls ages 25-29 were married by ages 15, 18, and 20 than girls ages 20-24.

**Table 8. Age at Marriage**



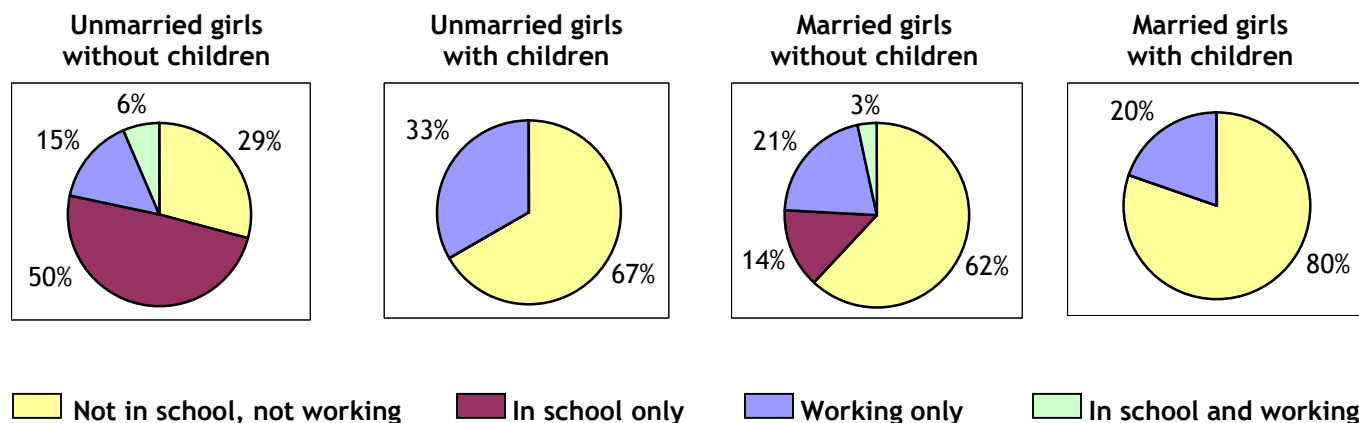
**Table 9. Sexuality and Childbearing**

- One out of six girls 15-19 years old has ever had sexual intercourse.
- One out of ten girls ages 15-19 is sexually active. More than two-thirds of sexually active girls are married.
- Seventy-four percent of 15-19-year-old married girls have ever been pregnant, and 63% have had a child.

**Table 10. Educational Enrollment and Work Status**

- Over half of unmarried girls ages 15-19 without children are in school, but almost a third are neither in school nor working.
- Unmarried girls ages 15-19 with children are the most likely group to be working.
- No girls 15-19 years old with children are in school.
- Four out of five married girls with children are neither in school nor working.

**Table 10. Educational Enrollment and Work Status of Girls 15-19 Years Old**



**Table 11. Awareness and Use of Modern Contraceptive Methods**

- Most girls 15-19 years old have heard of a modern method of contraception; ever-married girls are slightly more knowledgeable than never-married girls.
- Among sexually active girls ages 15-19, never-married girls are more than five times more likely to be currently using a modern method than ever-married girls.

**Table 12. Awareness of HIV/AIDS**

- Nearly all girls 15-19 years old (98%) have heard of HIV/AIDS.
- Almost two-thirds of those who have heard of HIV/AIDS know that a healthy-looking person can have the virus.
- More than half of girls 15-19 years old who have heard of HIV/AIDS perceive themselves to be at high risk of HIV/AIDS, but only 13% of sexually active girls are currently using condoms as their primary method of contraception.

**Table 1**  
**Urban-Rural Residence and Population Distribution**

	Percent Distribution			Percent of Total Population
	Urban <sup>a</sup>	Rural <sup>a</sup>	Total	
<b>Girls</b>				
10-14	26.4	73.6	100.0	6.8
15-19	29.4	70.6	100.0	6.4
<b>Boys</b>				
10-14	25.1	74.9	100.0	7.2
15-19	35.0	65.0	100.0	5.5

<sup>a</sup> Refer to the DHS report cited in the Technical Notes for the definitions used for urban and rural areas.

**Guide to reading the table:**

- In the first column of percentages (under “Urban”), read the first number as the percentage of girls 10-14 years old who live in urban areas.
- In the fourth column of percentages (under “Percent of Total Population”), read the first number as the percentage of the total population who are girls 10-14 years old.

**Table 2**  
**Parental Survival Status and Residence in Household**  
**(Percent Distribution)**

Parental Survival Status					
	Both Parents Alive	Father Alive, Mother Dead	Mother Alive, Father Dead	Neither Parent Alive	Total
<b>Girls</b>					
10-14	91.2	3.4	5.0	0.4	100.0
15-19	X	X	X	X	X
<b>Boys</b>					
10-14	91.9	3.0	4.9	0.2	100.0
15-19	X	X	X	X	X
Parents Resident in Household <sup>a</sup>					
	Both Parents in Household	Father Only in Household	Mother Only in Household	Neither Parent in Household	Total
<b>Girls</b>					
10-14	43.0	2.7	25.1	29.2	100.0
15-19	X	X	X	X	X
<b>Boys</b>					
10-14	49.4	3.2	24.3	23.1	100.0
15-19	X	X	X	X	X

<sup>a</sup> An adolescent is defined as not living with a parent if the parent is deceased or does not live in the household in which the adolescent resides.

**Guide to reading the table:**

- In the first column of percentages in the upper panel (under “Both Parents Alive”), read the first number as the percentage of girls 10-14 years old whose parents are living.
- In the first column of percentages in the lower panel (under “Both Parents in Household”), read the first number as the percentage of girls 10-14 years old who live in households in which both parents reside.

**Table 3**  
**Characteristics of Head of Household<sup>a</sup>**  
**(Percent)**

	<b>Female Household Head</b>	<b>Non-Parent Household Head</b>
<b>Girls</b>		
10-14	32.3	44.4
15-19	31.7	X
<b>Boys</b>		
10-14	32.2	36.5
15-19	29.7	X

<sup>a</sup> The head of each household was identified by the member of that household responding to the household survey.

**Guide to reading the table:**

- In the first column of percentages (under “Female Household Head”), read the first number as the percentage of girls 10-14 years old who live in households with a female head.
- In the second column of percentages (under “Non-Parent Household Head”), read the first number as the percentage of girls 10-14 years old who live in households headed by someone other than their mother or father.

**Table 4**  
**Educational Enrollment and Attainment**

<b>Current Enrollment (Percent Distribution)</b>						
	<b>Not in School</b>	<b>In Primary<sup>a</sup></b>	<b>In Secondary<sup>b</sup></b>	<b>In Higher</b>	<b>Total</b>	
<b>Girls</b>						
10-14	40.5	57.5	2.0	0.0	100.0	
15-19	53.3	28.4	18.3	0.0	100.0	
<b>Boys</b>						
10-14	28.5	69.8	1.7	0.0	100.0	
15-19	39.1	36.8	24.0	0.1	100.0	
<b>Educational Attainment (Percent)</b>						
	<b>Completed 4+ Years</b>		<b>Completed Primary School</b>			
<b>Girls</b>						
15-19	48.7		27.4 <sup>d</sup>			
20-24	52.1		41.1			
25-29	43.8		36.3			
<b>Girls 15-29</b>						
Poorest 40% <sup>c</sup>	27.3		16.2			
Middle 40%	51.7		33.9			
Richest 20%	76.5		60.8			
<b>Boys</b>						
15-19	63.3		35.9 <sup>d</sup>			
20-24	66.2		51.3			
25-29	63.3		54.2			
<b>Boys 15-29</b>						
Poorest 40% <sup>c</sup>	50.4		29.1			
Middle 40%	67.6		46.2			
Richest 20%	77.0		64.1			

<sup>a</sup> Primary school in Comoros consists of six grades.

<sup>b</sup> Secondary school in Comoros consists of seven grades.

<sup>c</sup> For an explanation of these categories, refer to the Technical Notes at the beginning of this document.

<sup>d</sup> Because some 15-19-year-olds may still be attending primary school, caution should be used when comparing primary school completion rates of 15-19-year-olds to completion rates in older age groups or across countries.

**Guide to reading the table:**

- In the first column of percentages in the upper panel (under “Not in School”), read the first number as the percentage of girls 10-14 years old who are not currently enrolled in school.
- In the first column of percentages in the lower panel, read the fourth number (opposite “Poorest 40%”) as the percentage of girls 15-29 years old in the poorest 40% of households who have completed four or more years of formal education.

**Table 5**  
**Educational Enrollment and Attainment in Urban Areas<sup>a</sup>**

	Current Enrollment (Percent Distribution)				Total
	Not in School	In Primary <sup>b</sup>	In Secondary <sup>c</sup>	In Higher	
<b>Girls</b>					
10-14	32.9	61.6	5.5	0.0	100.0
15-19	37.5	26.4	36.1	0.0	100.0
<b>Boys</b>					
10-14	22.0	74.8	3.1	0.0	100.0
15-19	32.1	29.2	38.4	0.4	100.0
Educational Attainment (Percent)					
	Completed 4+ Years		Completed Primary School		
<b>Girls</b>					
15-19	70.6		44.2 <sup>e</sup>		
20-24	68.3		58.9		
25-29	68.4		60.8		
<b>Girls 15-29</b>					
Poorest 40% <sup>d</sup>	34.7		21.2		
Middle 40%	68.0		47.1		
Richest 20%	85.3		71.2		
<b>Boys</b>					
15-19	73.7		51.8 <sup>e</sup>		
20-24	72.7		59.5		
25-29	73.0		66.0		
<b>Boys 15-29</b>					
Poorest 40% <sup>d</sup>	49.0		32.0		
Middle 40%	78.5		59.2		
Richest 20%	83.6		72.1		

<sup>a</sup> Refer to the DHS report cited in the Technical Notes for the definitions used for urban and rural areas.

<sup>b</sup> Primary school in Comoros consists of six grades.

<sup>c</sup> Secondary school in Comoros consists of seven grades.

<sup>d</sup> For an explanation of these categories, refer to the Technical Notes at the beginning of this document.

<sup>e</sup> Because some 15-19-year-olds may still be attending primary school, caution should be used when comparing primary school completion rates of 15-19-year-olds to completion rates in older age groups or across countries.

**Guide to reading the table:**

- In the first column of percentages in the upper panel (under “Not in School”), read the first number as the percentage of girls 10-14 years old living in urban areas who are not currently enrolled in school.
- In the first column of percentages in the lower panel, read the fourth number (opposite “Poorest 40%”) as the percentage of girls 15-29 years old in the poorest 40% of households and living in urban areas who have completed four or more years of formal education.



**Table 6**  
**Educational Enrollment and Attainment in Rural Areas<sup>a</sup>**

	Current Enrollment (Percent Distribution)				Total
	Not in School	In Primary <sup>b</sup>	In Secondary <sup>c</sup>	In Higher	
<b>Girls</b>					
10-14	43.2	56.1	0.7	0.0	100.0
15-19	59.9	29.3	10.7	0.0	100.0
<b>Boys</b>					
10-14	30.7	68.1	1.2	0.0	100.0
15-19	42.9	41.0	16.1	0.0	100.0

	Educational Attainment (Percent)	
	Completed 4+ Years	Completed Primary School
<b>Girls</b>		
15-19	39.7	20.4 <sup>c</sup>
20-24	44.0	32.1
25-29	33.4	25.9
<b>Girls 15-29</b>		
Poorest 40% <sup>d</sup>	25.8	15.2
Middle 40%	45.4	28.8
Richest 20%	63.9	45.9
<b>Boys</b>		
15-19	57.6	27.3 <sup>c</sup>
20-24	62.3	46.3
25-29	58.1	47.9
<b>Boys 15-29</b>		
Poorest 40% <sup>d</sup>	50.9	28.1
Middle 40%	62.6	40.2
Richest 20%	68.9	54.1

<sup>a</sup> Refer to the DHS report cited in the Technical Notes for the definitions used for urban and rural areas.

<sup>b</sup> Primary school in Comoros consists of six grades.

<sup>c</sup> Secondary school in Comoros consists of seven grades.

<sup>d</sup> For an explanation of these categories, refer to the Technical Notes at the beginning of this document.

<sup>e</sup> Because some 15-19-year-olds may still be attending primary school, caution should be used when comparing primary school completion rates of 15-19-year-olds to completion rates in older age groups or across countries.

**Guide to reading the table:**

- In the first column of percentages in the upper panel (under “Not in School”), read the first number as the percentage of girls 10-14 years old living in rural areas who are not currently in school.
- In the first column of percentages in the lower panel, read the fourth number (opposite “Poorest 40%”) as the percentage of girls 15-29 years old in the poorest 40% of households and living in rural areas who have completed four or more years of formal education.

**Table 7**  
**Educational Enrollment in Urban and Rural Areas<sup>a</sup>: Comparison Summary**

	Current Enrollment (Percent)			
	Not in School		In Primary <sup>b</sup>	
	Urban	Rural	Urban	Rural
<b>Girls</b>				
10-14	32.9	43.2	61.6	56.1
15-19	37.5	59.9	26.4	29.3
<b>Boys</b>				
10-14	22.0	30.7	74.8	68.1
15-19	32.1	42.9	29.2	41.0
	In Secondary <sup>c</sup>		In Higher	
	Urban	Rural	Urban	Rural
	<b>Girls</b>			
10-14	5.5	0.7	0.0	0.0
15-19	36.1	10.7	0.0	0.0
<b>Boys</b>				
10-14	3.1	1.2	0.0	0.0
15-19	38.4	16.1	0.4	0.0

<sup>a</sup> Refer to the DHS report cited in the Technical Notes for the definitions used for urban and rural areas.

<sup>b</sup> Primary school in Comoros consists of six grades.

<sup>c</sup> Secondary school in Comoros consists of seven grades.

**Guide to reading the table:**

- In the first column of percentages in the upper panel (under “Not in School: Urban”), read the first number as the percentage of girls 10-14 years old living in urban areas who are not currently enrolled in school.
- In the second column of percentages in the upper panel (under “Not in School: Rural”), read the first number as the percentage of girls 10-14 years old living in rural areas who are not currently enrolled in school.

**Table 8**  
**Marital Status**  
**(Percent Distribution)**

	Never-Married	Currently Married or in Union <sup>a</sup>	Separated, Divorced, or Widowed	Total
<b>Girls</b>				
10-14	X	X	X	X
15-19	88.5	10.2 <sup>b</sup>	1.3	100.0
<b>Boys</b>				
10-14	X	X	X	X
15-19	X	X	X	X
	Married by Age 15 (Percent) <sup>c</sup>	Married by Age 18 (Percent) <sup>c</sup>	Married by Age 20 (Percent) <sup>c</sup>	Median Age at First Marriage (Years)
<b>Girls</b>				
20-24	9.2	29.7	39.8	X <sup>d</sup>
25-29	13.1	33.9	47.4	20.4
<b>Boys</b>				
20-24	X	X	X	X
25-29	X	X	X	X

<sup>a</sup> "In union" refers to girls who are in unions of cohabitation.

<sup>b</sup> Just over 9% of currently married girls 15-19 years old are in polygamous unions, with the percentage increasing among older age groups.

<sup>c</sup> Defined as the percentage of girls in each age group who were married or in union by their 15<sup>th</sup>, 18<sup>th</sup>, or 20<sup>th</sup> birthday, respectively.

<sup>d</sup> Omitted because less than 50% in the age group were married by age 20.

**Guide to reading the table:**

- In the first column of percentages in the upper panel (under "Never-Married"), read the second number as the percentage of girls 15-19 years old who have never been married.
- In the first column of percentages in the lower panel (under "Married by Age 15"), read the first number as the percentage of girls 20-24 years old who were married by their 15<sup>th</sup> birthday.
- In the last column of percentages in the lower panel (under "Median Age at First Marriage"), read the second number as the age by which 50% of girls 25-29 years old were married.

**Table 9**  
**Sexuality and Childbearing**  
**(Percent)**

	Ever Had Sexual Intercourse			Sexually Active <sup>a</sup>			Of Sexually Active, the Percent Married
	Of Never-Married	Of Total	Median Age at 1 <sup>st</sup> Sex (Years)	Of Unmarried <sup>b</sup>	Of Married <sup>c</sup>	Of Total	
<b>Girls</b>							
10-14	X	X	X	X	X	X	X
15-19	6.3	16.6	X	3.4	69.8	10.2	69.8
<b>Boys</b>							
10-14	X	X	X	X	X	X	X
15-19	X	X	X	X	X	X	X
	Ever Pregnant <sup>d</sup>			Ever Had Child			
	Of Never-Married	Of Ever-Married <sup>e</sup>	Of Total	Of Never-Married	Of Ever-Married <sup>e</sup>	Of Total	
<b>Girls</b>							
10-14	X	X	X	X	X	X	
15-19	0.7	74.2	9.1	0.1	62.9	7.3	

<sup>a</sup>“Sexually active” is defined as reporting having had sexual intercourse within the last 28 days.

<sup>b</sup>“Unmarried” refers to girls who are currently neither married nor in unions of cohabitation. It includes those who are separated, divorced, or widowed.

<sup>c</sup>“Married” refers to girls who are currently married or in unions of cohabitation.

<sup>d</sup>The DHS collected information on past live births and current pregnancy status at the time of the interview. Information was not collected on miscarriages, stillbirths, or abortions, and hence is not included in the calculation of “ever pregnant.” This statistic, therefore, is likely to be an underestimate of the true percentage of girls who have ever been pregnant.

<sup>e</sup>“Ever-married” refers to girls who are currently married, in union, separated, divorced, or widowed.

**Guide to reading the table:**

- In the first column of percentages in the upper panel (under “Ever Had Sexual Intercourse: Of Never-Married”), read the second number as the percentage of girls 15-19 years old who have had sexual intercourse among those who have never been married.
- In the seventh column of percentages in the upper panel (under “Of Sexually Active, the Percent Married”), read the second number as the percentage of girls 15-19 years old who are married, among those who report having had sex within the last 28 days.
- In the first column of percentages in the lower panel (under “Ever Pregnant: Of Never-Married”), read the second number as the percentage of girls 15-19 years old who have ever been pregnant, among those who have never been married.

**Table 10**  
**Educational Enrollment and Work<sup>a</sup> Status<sup>b</sup>**  
**(Percent Distribution)**

	<b>Not in School, Not Working</b>	<b>In School Only</b>	<b>Working Only</b>	<b>In School and Working</b>	<b>Total</b>
<b>Unmarried<sup>c</sup>, Without Children</b>					
<b>Girls</b>					
10-14	X	X	X	X	X
15-19	29.1	49.2	15.2	6.4	100.0
<b>Unmarried<sup>c</sup>, With Children</b>					
<b>Girls</b>					
10-14	X	X	X	X	X
15-19	66.7	0.0	33.3	0.0	100.0
<b>Married<sup>d</sup>, Without Children</b>					
<b>Girls</b>					
10-14	X	X	X	X	X
15-19	62.1	13.8	20.7	3.4	100.0
<b>Married<sup>d</sup>, With Children</b>					
<b>Girls</b>					
10-14	X	X	X	X	X
15-19	80.4	0.0	19.6	0.0	100.0

<sup>a</sup> Work is defined as both formal and informal, and excludes housework. It includes activities that are paid in cash or in kind, as well as work for a family farm or business.

<sup>b</sup> Information on work and parental status was not collected for boys.

<sup>c</sup> "Unmarried" refers to girls who are currently neither married nor in unions of cohabitation. It includes those who are separated, divorced, or widowed.

<sup>d</sup> "Married" refers to girls who are currently married or in unions of cohabitation.

**Guide to reading the table:**

- In the first column of percentages in the upper panel (under "Unmarried, Without Children: Not in School, Not Working"), read the second number as the percentage of unmarried girls 15-19 years old, without children, who are neither in school nor working.

**Table 11**  
**Awareness and Use of Modern Contraceptive Methods**  
**(Percent)**

	<b>Heard of a Modern Method of Contraception<sup>a</sup></b>	<b>Ever Used a Modern Method</b>	<b>Of Sexually Active<sup>b</sup>, Currently Using a Modern Method</b>
	<b>Never-Married</b>		
<b>Girls</b>			
10-14	X	X	X
15-19	90.6	2.7	34.8
<b>Boys</b>			
10-14	X	X	X
15-19	X	X	X
	<b>Ever-Married<sup>c</sup></b>		
<b>Girls</b>			
10-14	X	X	X
15-19	96.9	13.4	6.3
<b>Boys</b>			
10-14	X	X	X
15-19	X	X	X

<sup>a</sup> “Modern methods” of contraception include the oral contraceptive pill, intrauterine device, injections, diaphragm/foam/jelly, condom, female sterilization, male sterilization, and implants, including Norplant<sup>®</sup>.

<sup>b</sup> “Sexually active” is defined as reporting having had sexual intercourse within the last 28 days.

<sup>c</sup> The term “ever-married” includes girls who are currently married, in union, separated, divorced, or widowed.

**Guide to reading the table:**

- In the first column of percentages (under “Heard of a Modern Method of Contraception: Never-Married”), read the second number as the percentage of girls 15-19 years old who have heard of a modern method of contraception, among those who have never been married.
- In the third column of percentages (under “Of Sexually Active, Currently Using a Modern Method: Never-Married”), read the second number as the percentage of never-married girls 15-19 years old who currently use a modern method of contraception, among those who report having had sexual intercourse within the last 28 days.

**Table 12**  
**Awareness of HIV/AIDS**  
**(Percent)**

	Heard of HIV/AIDS			Know Someone Who Has or Has Died of HIV/AIDS <sup>b</sup>
	Of Never-Married	Of Ever-Married <sup>a</sup>	Of Total	
<b>Girls</b>				
10-14	X	X	X	X
15-19	98.3	99.0	98.3	X
<b>Boys</b>				
10-14	X	X	X	X
15-19	X	X	X	X
	Know a Healthy- Looking Person Can Have HIV/AIDS <sup>b</sup>	Perceive Themselves to Be at Moderate or Great Risk of HIV/AIDS <sup>b,c</sup>	Of Sexually Active <sup>d</sup> , Use Condom <sup>e</sup>	
<b>Girls</b>				
10-14	X	X	X	X
15-19	65.9	54.7	12.8	
<b>Boys</b>				
10-14	X	X	X	X
15-19	X	X	X	X

<sup>a</sup> “Ever-married” refers to girls who are currently married, in union, separated, divorced, or widowed.

<sup>b</sup> These calculations exclude those who have not heard of HIV/AIDS.

<sup>c</sup> Respondents were asked whether they think their risk of getting AIDS is small, moderate, great, or whether they have no risk at all. Respondents could also volunteer the information that they were infected with HIV. These latter respondents were excluded from the calculation.

<sup>d</sup> “Sexually active” is defined as reporting having had sexual intercourse within the last 28 days.

<sup>e</sup> “Use condom” refers to those who report condoms as their primary current contraceptive method. This statistic may be an undercount, since information on multiple method use was not collected.

**Guide to reading the table:**

- In the first column of percentages in the upper panel (under “Heard of HIV/AIDS: Of Never-Married”), read the second number as the percentage of girls 15-19 years old who have heard of HIV/AIDS among those who have never been married.
- In the third column of percentages in the lower panel (under “Of Sexually Active, Use Condom”), read the second number as the percentage of girls 15-19 years old who report condom use as their primary current contraceptive method, among those who report having had sexual intercourse within the last 28 days.

**Table 13**  
**Experience with Sexually Transmitted Diseases (STDs)**  
**(Percent)**

	<b>Heard of an STD</b>	<b>Have Had an STD in Last 12 Months</b>	<b>Sought Advice During Last Episode of an STD</b>
<b>Girls</b>			
10-14			
15-19			
<b>Data not collected for Comoros</b>			
<b>Boys</b>			
10-14			
15-19			



**Table 14**  
**Female Genital Circumcision**  
**(Percent)**

	<b>Circumcised</b>	<b>Median Age at Circumcision (Years)</b>	<b>Have Circumcised / Will Circumcise Eldest Daughter</b>
	<b>Never-Married</b>		
<b>Girls</b>			
10-14			
15-19	<b>Data not collected for Comoros</b>		
20-24			
	<b>Ever-Married</b>		
<b>Girls</b>			
10-14			
15-19	<b>Data not collected for Comoros</b>		
20-24			