

2001

Determinants of educational attainment among adolescents in Egypt: Does school quality make a difference? [Arabic]


Cynthia B. Lloyd
Population Council

Sahar El Tawila

Wesley H. Clark
Population Council

Barbara Mensch
Population Council

Follow this and additional works at: https://knowledgecommons.popcouncil.org/departments_sbsr-pgy

 Part of the [Demography, Population, and Ecology Commons](#), [Family, Life Course, and Society Commons](#), [Gender Equity in Education Commons](#), and the [International Public Health Commons](#)

Recommended Citation

Lloyd, Cynthia B., Sahar El Tawila, Wesley H. Clark, and Barbara Mensch. 2001. "Determinants of educational attainment among adolescents in Egypt: Does school quality make a difference?" Policy Research Division Working Paper no. 150 [Arabic]. New York: Population Council.

:

Cynthia B. Lloyd .
Sahar El Tawila
Wesley H. Clark .
Barbara S. Mensch .

2001 No. 150

:

Cynthia B. Lloyd .
Sahar El Tawila
Wesley H. Clark .
Barbara S. Mensch .

Cynthia B. Lloyd .
Wesley H. Clark .
Barbara S. Mensch .
Sahar El Tawila .

()

Lockheed and :)
Verspoor 1991; Velez et al. 1993; Harbison and Hanushek 1992; Fuller
(and Clarke 1994; Glewwe 1999

.(Mincer 1974 :)

proxy
(.(Leibowitz 1974 :)
)

/ :
Mincer 1974;)
Grogger and Eide 1995;)

(Psacharopoulos 1989
(Murnane et al. 1995

(Behrman and Birdsall 1983)

23 (Bett 1996)

:

Bett

"

.()

.(183 .) "

-
- (Card and Krueger 1992)

"

(

.(123 .) "

.(Lloyd and Mensch 1999)

Lloyd et)

(Glewwe and Jacoby 1994)

:
(al. 2000

)
Harbison and Hanushek :

(1992; Hanushek and Lavy 1994
(Schultz 1987 :

(2 (" ")

(1 :

(3 i

.(1)

:)

.(

()

() (:)

·
:
·
:
:()
·

/ ·
:
·
:()
·

·
:() /()

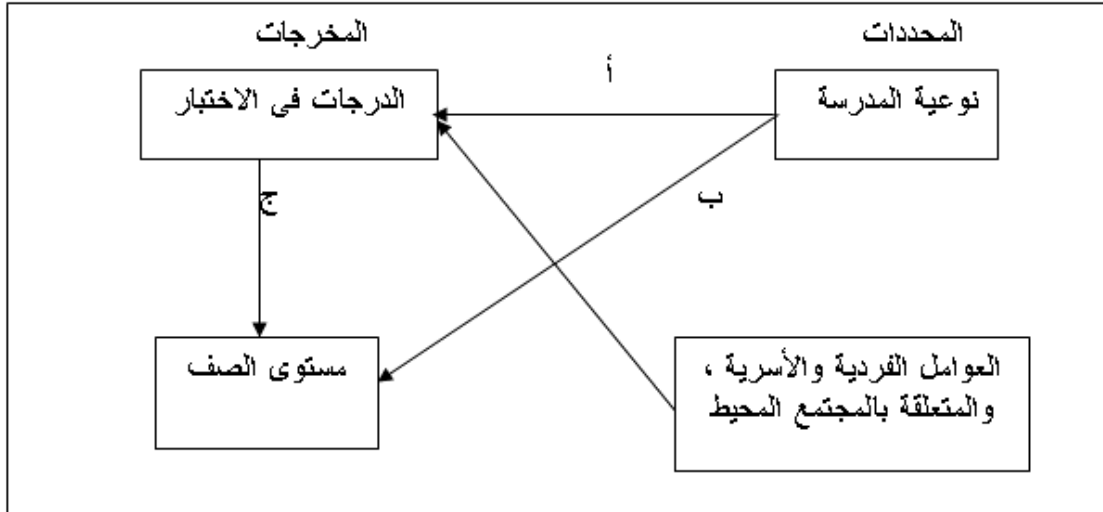
·
:() / :
· /
:
· /

/

()

.()

الشكل البياني ١ نوعية المدرسة والمخرجات التعليمية



()
(Card and Krueger 1996 :)
:

(Lloyd et al. 2000)

()

() : ()
1984

(World Bank 1989)
:

()
%88 .
%4 %7
%1

ii

.(Mahrouse 1994)
%50

) ()
.(

iii

.(World Bank 1989)

.(Assaad 1999)

- - 1964

1995

1983

.(Assaad 1997a) 1982

: .

- . -
.
.

.(Assaad 1997b, 1999)

19 10
(%84)

%95)

.iv(

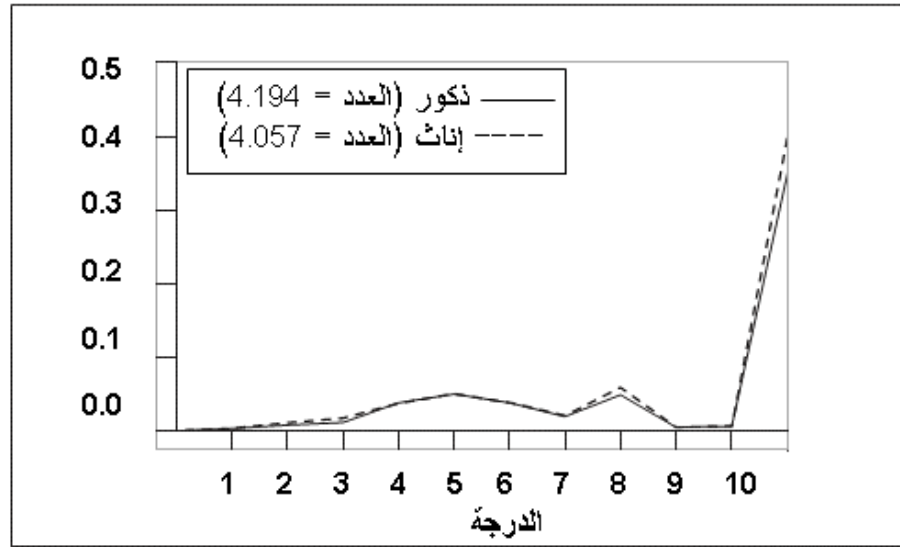
.
.
.
.

.(2)

.()
.

:2

الشكل البياني ٢: معدلات الخطر للتسرب من التعليم في صفوف المراهقين الذين سبق لهم الالتحاق بالتعليم، على أساس الصف والجنس.



:

1997

(")

- "

" -

.1998

10

9.128

1997

. 19-

v

-

.

-

-

(

:

)

75

101

-

-

.

37

-

-

vi

(Mensch and Lloyd 1998; Lloyd et al. 2000)

75

(6)

1999/1998

vii

(

)

2

/

viii

ix

/

/

/		/			*	
1	1	1		75	75	/
2-1	2-1	2-1		73	85	/
1-0	1-0	1-0		58	58	/ - /
7-5	-8 12	6-4		75	480	** /
56-32	-36 69	38-17) (75	2.495	/
1	2	1		75	84	
7-4	-11 12	6-4		75	479	
3	6-3	3-2		75	227	
1	1	1		75	75	

- - *

84 . 75

. 450 480

. / **

/ / / / /

.x / /

(/)

.xi / / / / /

xii(888 726) 1.614

1997

1.562

.(37 52 1.872) %83 (1.562)

22 15 %83

) %77
(El Tawila et al. 1999

) 53 - - .
(- -)
(

/)
xiii(19 3

3 .1
47 3

51

/ %81 %47

-

-

(%5 %22) .(%11 %29)
 %32 %43) .(
 3

(51 =)		(47 =)		
47.0	32.0	47.0	32.0	(%)
21.7	48.9	20.7	46.4	12 %
39.1	31.7	27.9	31.4	(%)
0.25	0.27	0.25	0.28	
3.4	16.7	3.6	17.3	(/)
2.7	8.6	3.1	8.9	()
20.4	53.6	19.9	50.8	(%)
21.1	84.8	13.6	87.7	(%)
23.7	34.1	22.3	39.4	(%)
35.1	80.7	28.8	47.0	(%) /
10.1	80.3	8.5	83.8	
7.8	43.7	8.4	43.3	
8.2	4.6	17.9	22.4	(%)
9.5	11.0	19.1	28.7	(%)
19.6	40.7	20.9	40.0	(%)
18.9	32.0	21.2	43.0	(%)
0.35	0.39-	0.41	0.05-) (1- = 1 =
0.35	0.22	0.37	0.23	1 =) (1- =
16.2	28.2	18.9	26.9	/

				" "	%)		6
--	--	--	--	-----	----	--	---

.

.

.

.

.

12
 xiv 25-67 %46
 - 44 43 -
 .%19 %61 %40
 .3
 6.5
 .(27-71)
 .0.02-0.53 %49
 0.27
 35 52

time hazard

.

.

.

Glewwe and Jacoby 1994; Glewwe et al. 1995)

endogeneity

(1 :

.(

(2

(3

.

1995

30

%9

.() .

.(Hussein 1988)

%3

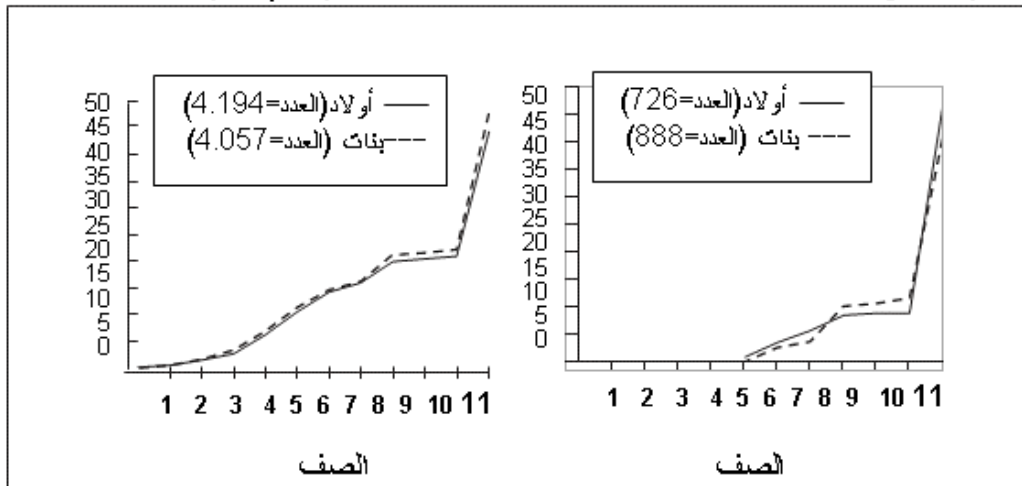
xv

3

الشكل البياني ٣ النسبة المتراكمة للمراهقين الذين تركوا المدرسة، وفقاً للصف والجنس

العينة الإجمالية

العينة المترابطة



) 4 (5 . ()

19

() : xvi () () ()

Bommier and Lambert 2000;)

.(Lloyd et al. 2000

) Household assets index .(

(Filmer and Pritchett 1999) proxy

xvii

20

.(Assaad 2001)

" "

" "

." " 20

4

) (

El Tawila et al.) (%59 %75) (2001)

%11 1995 (Mensch et al. 2000)
 Amin and Lloyd) %21 (1998)

4

(865=)		(707=)		
2	1	2	1	
1.13	1.10	+0.86	+0.86	()
1.32	**0.31	+0.00	*0.25	(=)
0.88	0.79	0.98	0.87	
0.98	1.00	+0.74	*0.74	
0.96	0.96	*0.83	*0.83	
0.64	0.70	0.87	0.93	(=)
0.89	1.03	1.00	0.85	
*5.73		1.27		(1 =)
*0.71		1.09		
0.82		1.29		(%)
*1.23		*1.47		
1.03		1.03) (
0.80		1.56		()
*0.69		1.50		(=)
0.97		0.70)

(865=)		(707=)		
2	1	2	1	
				(=
+0.88		1.26		(%) /
0.71		0.91		(%)
1.13		2.62		
1.01		1.12		
0.73		1.23		(%)
1.49		0.87		(%)
0.99		*0.50		(%)
**0.71		0.63		(%)
0.99		1.03		(1-= 1=)
1.13		1.50		1=) (1-=
0.98		0.82		" " (%) (

+P<0.10; *P<0.05; **P<0.01

(5)

xix

.(%39 %31)

Logistic Regression

5

()

(865=)		(707=)		
2	1	2	1	
**2.08	**2.13	+1.28	1.24	()
0.78	**0.27	*0.00	*0.26	(=)
0.78	+0.73	1.05	0.95	
1.04	1.02	+0.77	+0.79	
0.98	0.98	*0.84	*0.85	
0.65	0.77	0.88	0.95	(=)
0.84	0.77	0.97	0.81	
*6.46		1.21		(1 =)
+0.70		1.15		
0.87		1.29		(%)
+1.20		+1.46		
1.04		1.02) (

(865=)		(707=)		
2	1	2	1	
0.81		1.55		()
**0.61		1.45		(=)
0.86		0.69) (=
**0.86		1.25		(%) /
*0.68		0.95		(%)
1.07		2.44		
0.97		1.12		
0.63		1.30		(%)
*1.92		0.89		(%)
0.89		**0.51		(%)
*1.84		0.60		(%)
1.00		1.04		(1- = 1=)
1.12		1.50		1=) (1-=
0.91		0.84		(%) " "

+P<0.10; *P<0.05; **P<0.01

– – .
(Naguib and Lloyd 1994)
(Nawar, Lloyd, and Ibrahim 1995)

– – .
.(Lloyd at al. 2000)



			.()	
			.()	
			.(/ 12)	%
		()		%
				%
	.	()		%
)			.()	
		.()	()	
		.()	()	
	.			%
				%
	-			%
				-
.				%
/				%
				%
				%
				%
			()	%
				%

·
·

%

·

%

·

·
() 1999-1998
" "

·()

/

%

·

·

·

)

/

·(1- =

1 =

/
·(1- =

1 =

" "

)

·()

%

%

·

/

%

/

·

·

%

·

%

·

%

·

%

·

%

·

·

%

%
%
%

· / · : 12 / ()
/ / / · 200
/1998 98/1997 ()
· : " " 99
· : ()
· :
· :
· .2001

REFERENCES

- Amin, Sajeda and Cynthia B. Lloyd. 1998. "Women's lives and rapid fertility decline: Some lessons from Bangladesh and Egypt," Policy Research Division Working Paper no. 117. New York: Population Council.
- Assaad, Ragui. 1997a. "The effects of public sector hiring and compensation policies on the Egyptian labor market," *The World Bank Economic Review* 11(1): 85–118.
- . 1997b. "The employment crisis in Egypt: Current trends and future prospects," *Research in Middle East Economics* 2(1): 39–66.
- . 1999. Personal communication.
- . 2001. Personal communication.
- Behrman, Jere R. and Nancy Birdsall. 1983. "The quality of schooling: Quantity alone is misleading," *The American Economic Review* 73(5): 928–946.
- Betts, Julian R. 1996. "Is there a link between school inputs and earnings? Fresh scrutiny of an old literature," in G. Burtless (ed.), *Does Money Matter? The Effect of School Resources on Student Achievement and Adult Success*. Washington, DC: Brookings Institution Press, pp. 140–191.
- Bommier, Antoine and Sylvie Lambert. 2000. "Education demand and age at school enrollment in Tanzania," *The Journal of Human Resources* 35(1): 177–203.
- Card, David and Alan B. Krueger. 1992. "Does school quality matter? Returns to education and the characteristics of public schools in the United States," *Journal of Political Economy* 100(1): 1–40.
- . 1996. "Labor market effects of school quality: Theory and evidence," in G. Burtless (ed.), *Does Money Matter? The Effect of School Resources on Student Achievement and Adult Success*. Washington, DC: Brookings Institution Press, pp. 97–

139.

El Tawila, Sahar, Barbara Ibrahim, Omaima El-Gibaly, Fikrat El Sahn, Sunny Sallam, Susan M. Lee, Barbara Mensch, Hind Wassef, Sarah Bukhari, and Osman Galal.

1999. *Transitions to Adulthood: A National Survey of Egyptian Adolescents*. Cairo: Population Council.

El Tawila, Sahar, Hind Wassef, Cynthia B. Lloyd, Barbara S. Mensch, and Zeinab Gamal.

2001. *The School Environment in Egypt: A Situation Analysis of Public Preparatory Schools*. Cairo: Population Council.

Filmer, Deon and Lant Pritchett. 1999. "The effect of household wealth on educational attainment: Evidence from 35 countries," *Population and Development Review*

25(1): 85–120.

Fuller, Bruce and Prema Clarke. 1994. "Raising school effects while ignoring culture? Local conditions and the influence of classroom tools, rules and pedagogy," *Review of Educational Research* 64(1): 119–158.

Glewwe, Paul. 1999. "School quality, student achievement, and fertility in developing countries," in Caroline H. Bledsoe, John B. Casterline, Jennifer A. Johnson-Kuhn, and John G. Haaga (eds.), *Critical Perspectives on Schooling and Fertility in the Developing World*. Washington, DC: National Academy Press, pp. 105–137.

Glewwe, Paul, Margaret Grosch, Hanan Jacoby, and Marlaine Lockheed. 1995. "An eclectic approach to estimating the determinants of achievement in Jamaican primary education," *The World Bank Economic Review* 9(2): 231–258.

Glewwe, Paul and Hanan Jacoby. 1994. "Student achievement and schooling choice in low income countries: Evidence from Ghana," *The Journal of Human Resources*

29(3): 843–864.

Grogger, Jeff and Eric Eide. 1995. "Changes in college skills and the

- rise in the college wage premium,” *The Journal of Human Resources* 30(2): 280–310.
- Hanushek, Eric A. and Victor Lavy. 1994. “School quality, achievement bias, and drop- out behavior in Egypt,” Living Standards Measurement Study Working Paper no. 107. Washington, DC: World Bank.
- Harbison, Ralph W. and Eric A. Hanushek. 1992. *Educational Performance of the Poor: Lessons from Rural Northeast Brazil*. New York: Oxford University Press.
- Hussein, Salwa. 1988. “Socio-economic disparities and internal migration among Egyptian governorates,” in *Studies in African and Asian Demography: CDC Annual Seminar, 1987*. Cairo Demographic Centre Research Monograph Series no. 17, pp. 199–247.
- Leibowitz, Arlene. 1974. “Home investments in children,” *The Journal of Political Economy* 82(2, part 2): S111–S131.
- Lloyd, Cynthia B. and Barbara Mensch. 1999. “Implications of formal schooling for girls’ transitions to adulthood in developing countries,” in Caroline H. Bledsoe, John B. Casterline, Jennifer A. Johnson-Kuhn, and John G. Haaga (eds.), *Critical Perspectives on Schooling and Fertility in the Developing World*. Washington, DC: National Academy Press, pp. 80–104.
- Lloyd, Cynthia B., Barbara S. Mensch, and Wesley H. Clark. 2000. “The effects of primary school quality on school dropout among Kenyan girls and boys,” *Comparative Education Review* 44(2): 113–147.
- Lockheed, Marlaine E.E. and Adriaan M. Verspoor. 1991. *Improving Primary Education in Developing Countries*. New York: Oxford University Press.
- Mahrouse, M.E. 1994. “Egypt: System of education,” in Torsten Husén and T. Neville Postlethwaite (eds.), *The International Encyclopedia*

of Education, 2nd ed., vol. 1. Oxford and New York: Pergamon, pp. 1939–1947.

Mensch, Barbara S., Barbara L. Ibrahim, Susan M. Lee, and Omaima El-Gibaly. 2000.

“Socialization to gender roles and marriage among Egyptian adolescents,” Policy Research Division Working Paper no. 140. New York: Population Council.

Mensch, Barbara S. and Cynthia B. Lloyd. 1998. “Gender differences in the schooling experiences of adolescents in low-income countries: The case of Kenya,” *Studies in Family Planning* 29(2): 167–184.

Mincer, Jacob. 1974. *Schooling, Experience, and Earnings*. New York: National Bureau of Economic Research, distributed by Columbia University Press.

Murnane, Richard J., John B. Willett, and Frank Levy. 1995. “The growing importance of cognitive skills in wage determination,” *The Review of Economics and Statistics* 77(2): 251–266.

Naguib, Nora Guhl and Cynthia B. Lloyd. 1994. *Gender Inequalities and Demographic Behavior: Egypt*. New York: Population Council.

Nawar, Laila, Cynthia B. Lloyd, and Barbara Ibrahim. 1995. “Women’s autonomy and gender roles in Egyptian families,” in Carla Makhlouf Obermeyer (ed.), *Family, Gender, and Population in the Middle East: Policies in Context*. Cairo: American University in Cairo Press, pp. 147–178.

Psacharopoulos, George. 1989. “Time trends of the returns to education: Cross-national evidence,” *Economics of Education Review* 8(3): 225–231.

Schultz, T. Paul. 1987. “School expenditures and enrollments, 1960–1980,” in D. Gale Johnson and Ronald D. Lee (eds.), *Population Growth and Economic Development: Issues and Evidence*.

Madison, WI: University of Wisconsin Press, pp. 413–478.

Velez, Eduardo, Ernesto Schiefelbein, and Jorge Valenzuela. 1993. "Factors affecting achievement in primary education," Human Resources Development and Operations Policy Working Paper no. 2. Washington, DC: World Bank.

World Bank. 1989. "Arab Republic of Egypt study on technical education," Internal Report no. 7400-EGT to the World Bank.

/ / /				i
	(El Tawila et al. 2001)			ii
		26		iii
	(World Bank 1989)			iv
			1997	v
(El Tawila et al. 1999)				vi
		101	50	
	14-10			
12				25
	75			vii
35				viii
	35			
				ix
	/			
			14	x

12

6

)

.(

.

" "

%90

%5

%90

(

)

:

-

-

/

(%1

4.2)

:

:

/

/
